

Atlantis®

exocad® Library for *Model Creator Module*



Instructions that will help you to import the **exocad® Library for Model Creator Module** and how to help prepare the models for printing. The library contains the **Elos Accurate® Printed Model Analog (PMA)** and the **MIS® Digital Model Analogs** connected to the following Scanbodies:

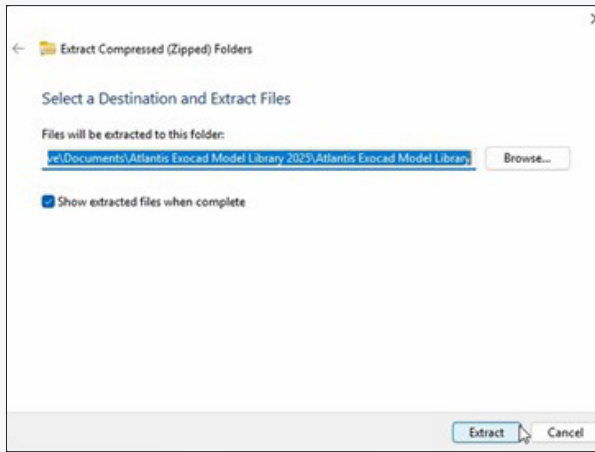
Atlantis® IO FLO
Atlantis® FLO

Elos Accurate® Scanbody22™
Elos Accurate® Scanbody

CoreMedTech® Scanbody (CMT)
Straumann® Scanbody

Please note that the compatibility of Scanbodies may vary between each Implant Connection.

1.0 Importing the library

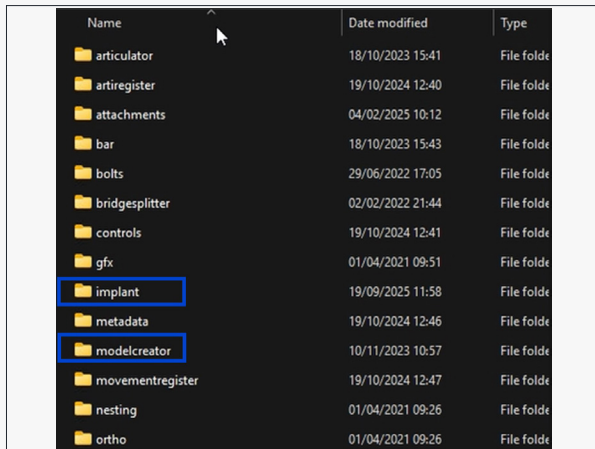


Download the library from either atlantiswebborder.com or orderdigitalsolutions.com.

Extract both folders:

Dummy implant library

Model Creator Module library

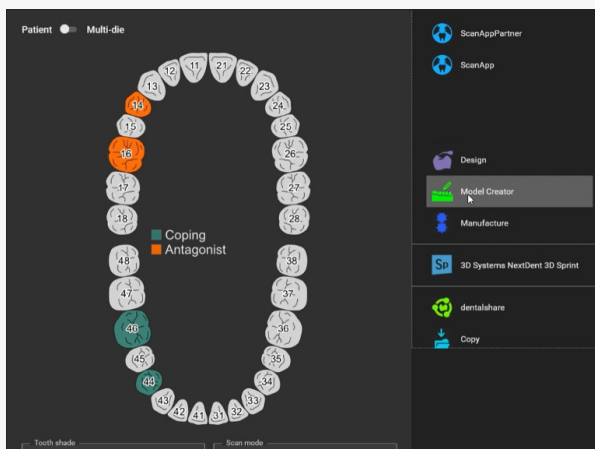


Copy and paste each folder to the exocad library folder.

Dummy implant library to be pasted into **Implant** folder.

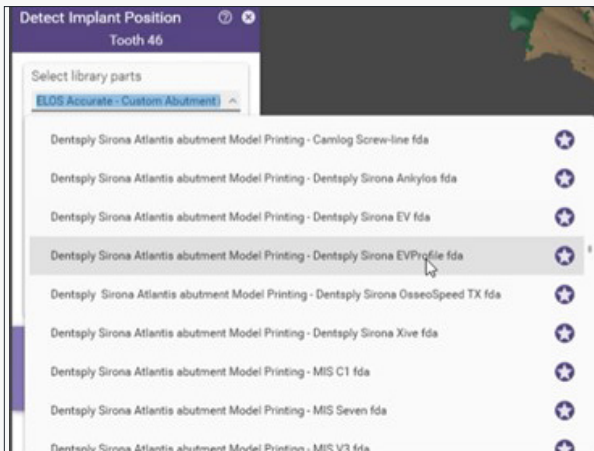
Model Creator Module library to be pasted into **modelcreator/implants** folder.

2.0 Creation of printed models

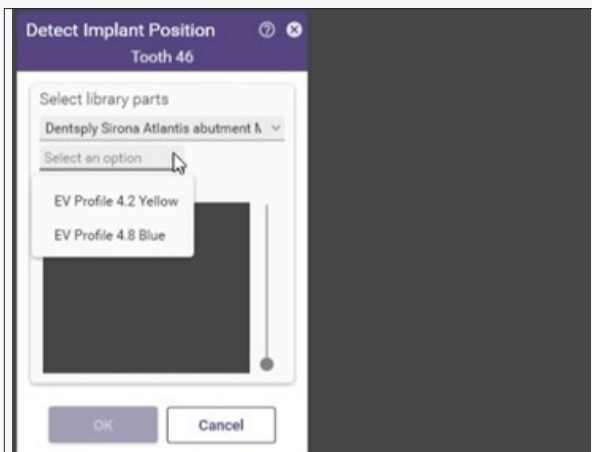


Open up requested job and define the order accordingly.

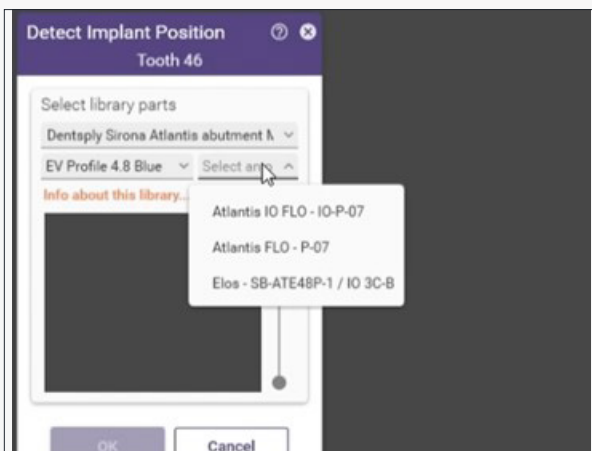
Select **Model Creator** to enter.



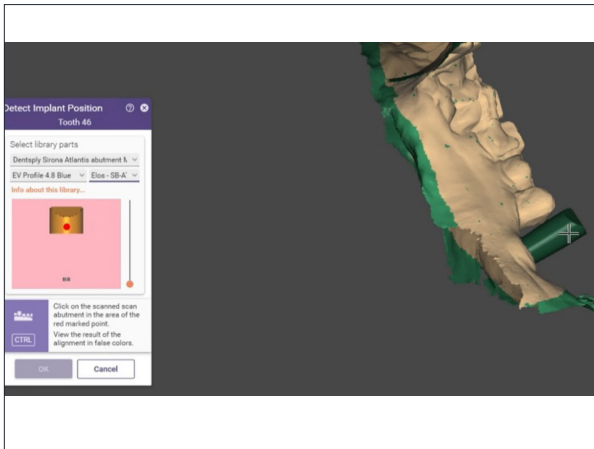
In *Model Creator Module*, select the appropriate **Dentsply Sirona Atlantis Abutment Model Printing** library.



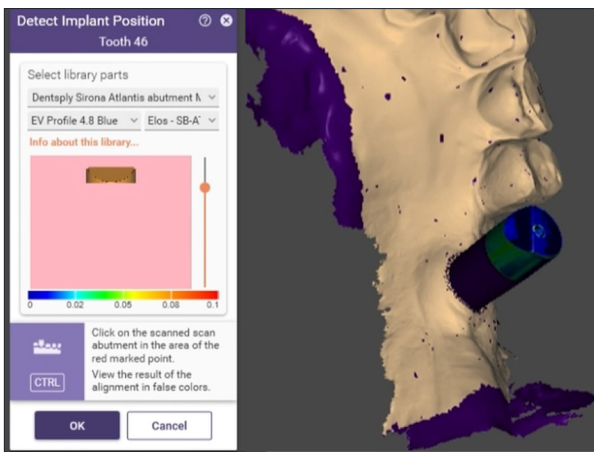
Select appropriate Implant connection.



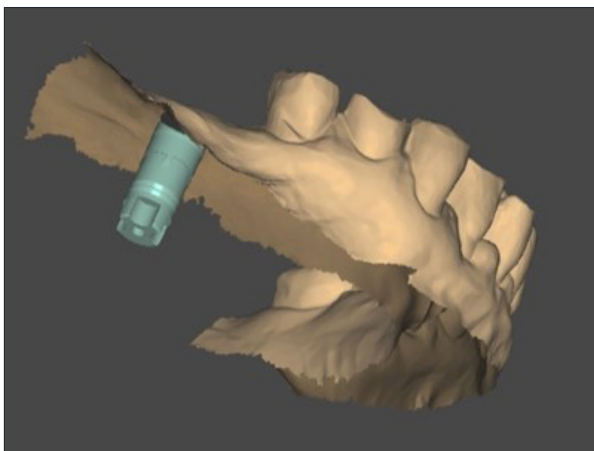
Select appropriate Scanbody type.



Click on the scanned Scanbody in the same area of the red marked point indicated on the left panel.



Review the result of the alignment and press OK.



Review alignment of virtual Elos Accurate® Printed Model Analog.

NOTE: Follow the remaining steps in exocad *Model Creator Module* to prepare the model (e.g., define area for removable gingiva).

Export, locate, and send .STL model file to your preferred 3D printer.