

# Welcome to Dentsply Sirona Implants

# Atlantis® Editor

- User guide presentation

Dentsply Sirona does not waive any right to its trademarks by not using the symbols ® or ™. 32670463-USX-2009 © 2020 Dentsply Sirona. All rights reserved.

BACK

FORWARD

MENU



# Menu

Click on any of the quick links below to find out more about each subject

Introduction	Viewing feature	Editing: Cement-retained restorations	Editing: Screw-retained restorations	Editing: Attachment-retained restorations	Additional information
System requirements	Controls and toolbar	Atlantis Crown, Cut-back	Atlantis CustomBase: Cut-back Crown	Atlantis Conus Abutment, overdenture	Violation messages
Installation	Virtual crown	Atlantis Crown, Full-contour	Atlantis CustomBase: Full contour Crown	Atlantis Conus Abutment, custom	Save changes and design approval
Using Google Chrome	Heat map tool	Atlantis Abutment	Atlantis CustomBase: Angulated screw access		Undo/Redo and revert design
			Atlantis CustomBase: Abutment		Frequently asked questions
			Atlantis Crown Abutment		

BACK

FORWARD

MENU

# Chapter 1.

# Introduction

The Atlantis Editor allows for real-time changes to the most common and basic design aspects. It does not allow for changes in the abutment design that might compromise the functional integrity and/or the ability to produce the product.

BACK

FORWARD

MENU

# Chapter 1. Introduction

## System requirements

BACK

FORWARD

MENU

# System requirements

The minimum system requirements for running Atlantis Editor:

- A PC running Windows Vista, or higher
  - Effective as of April 2014, Windows XP is no longer supported by Microsoft. As a result, technical support and future system updates for Atlantis Editor running in Windows XP will no longer be provided
- A 3D-capable graphics card

Compatible web browsers:

- Google Chrome (recommended)
  - See page 8 for more information
- Internet Explorer (32-bit versions only, IE 6 or newer)
- Mozilla Firefox

# Chapter 1. Introduction

## Installation

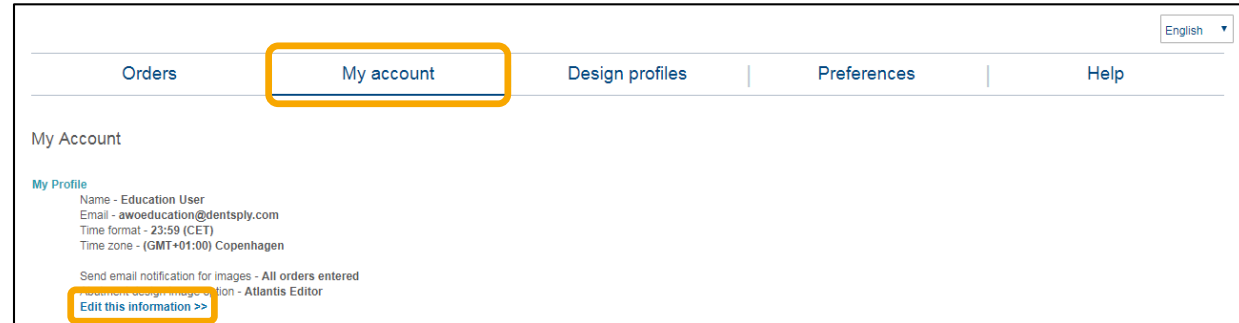
BACK

FORWARD

MENU

# Installation

Before installation, check that your user account in Atlantis WebOrder has Atlantis Editor activated, by clicking **My Account** and **Edit this information**



English ▼

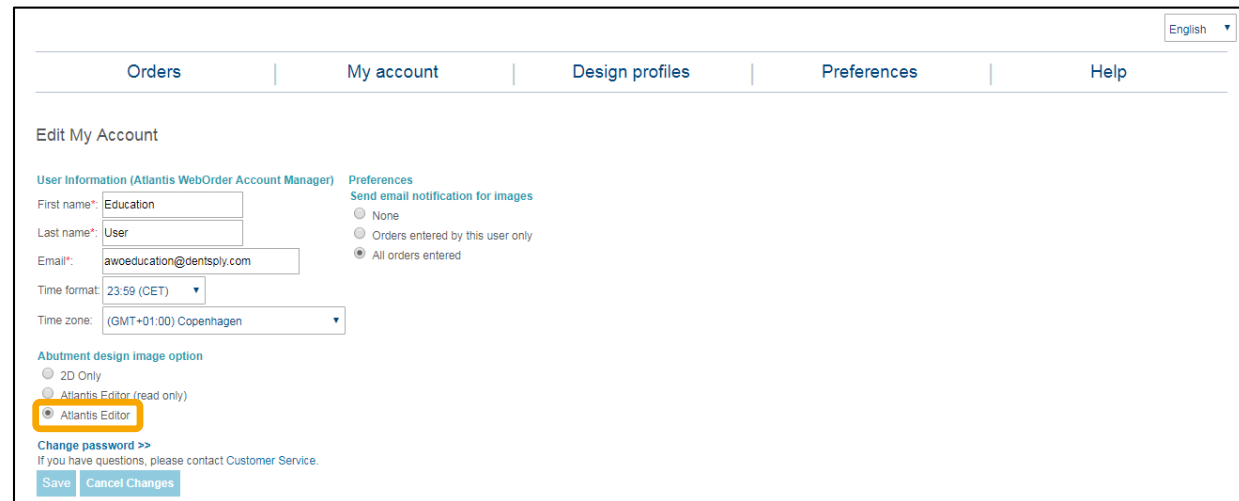
Orders | **My account** | Design profiles | Preferences | Help

My Account

**My Profile**  
Name - Education User  
Email - awoeducation@dentsply.com  
Time format - 23:59 (CET)  
Time zone - (GMT+01:00) Copenhagen

Send email notification for images - All orders entered  
Abutment design image option - Atlantis Editor

**Edit this information >>**



English ▼

Orders | My account | Design profiles | Preferences | Help

Edit My Account

**User Information (Atlantis WebOrder Account Manager)**

First name\*: Education  
Last name\*: User  
Email\*: awoeducation@dentsply.com  
Time format: 23:59 (CET)  
Time zone: (GMT+01:00) Copenhagen

**Preferences**  
Send email notification for images  
☐ None  
☐ Orders entered by this user only  
☒ All orders entered

**Abutment design image option**  
☐ 2D Only  
☐ Atlantis Editor (read only)  
**☒ Atlantis Editor**

**Change password >>**  
If you have questions, please contact Customer Service.

Save | Cancel Changes

BACK

FORWARD

MENU



# Installation

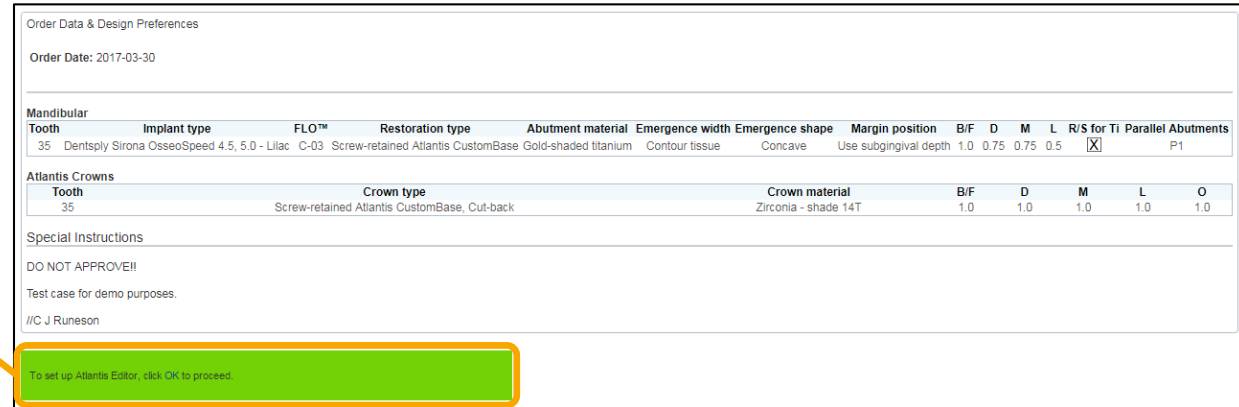
The first time you review case images for a case where **Hold case, send images** was selected, you will be prompted with the following installation message:

To set up Atlantis Editor, click **OK** to proceed.

- If you wish to set up Atlantis Editor, click **OK** to proceed
  - If you do not wish to install Atlantis Editor, you can ignore this message and review the 2D images for this case

Note: You may also click the following link, or copy and paste it into your browser, to download the latest version of Atlantis Editor:

[http://files.atlantisweborder.com/3deditor\\_latest.exe](http://files.atlantisweborder.com/3deditor_latest.exe)



Order Data & Design Preferences

Order Date: 2017-03-30

Mandibular	Tooth	Implant type	FLO™	Restoration type	Abutment material	Emergence width	Emergence shape	Margin position	B/F	D	M	L	R/S for Ti	Parallel	Abutments
	35	Dentsply Sirona OsseoSpeed 4.5, 5.0 - Lilac	C-03	Screw-retained Atlantis CustomBase	Gold-shaded titanium	Contour tissue	Concave	Use subgingival depth	1.0	0.75	0.75	0.5	<input checked="" type="checkbox"/>		P1

Atlantis Crowns	Tooth	Crown type	Crown material	B/F	D	M	L	O
	35	Screw-retained Atlantis CustomBase, Cut-back	Zirconia - shade 14T	1.0	1.0	1.0	1.0	1.0

Special Instructions

DO NOT APPROVE!!

Test case for demo purposes.

//C J Runeson

To set up Atlantis Editor, click OK to proceed.

BACK

FORWARD

MENU

# Installation

- Next, click **Atlantis Editor plugin**

To begin using Atlantis Editor, you must download and install the **Atlantis Editor plugin**. If prompted, click "Run" to install. Otherwise, locate and run the saved file when the download is complete.

Order Data & Design Preferences

Order Date: 2017-03-30

Mandibular	Tooth	Implant type	FLO™	Restoration type	Abutment material	Emergence width	Emergence shape	Margin position	B/F	D	M	L	R/S for Ti	Parallel	Abutments
	35	Dentsply Sirona OsseoSpeed 4.5, 5.0 - Lilac	C-03	Screw-retained Atlantis CustomBase	Gold-shaded titanium	Contour tissue	Concave	Use subgingival depth	1.0	0.75	0.75	0.5	<input checked="" type="checkbox"/>		P1

Atlantis Crowns

Tooth	Crown type	Crown material	B/F	D	M	L	O
35	Screw-retained Atlantis CustomBase, Cut-back	Zirconia - shade 14T	1.0	1.0	1.0	1.0	1.0

Special Instructions

DO NOT APPROVE!!

Test case for demo purposes.

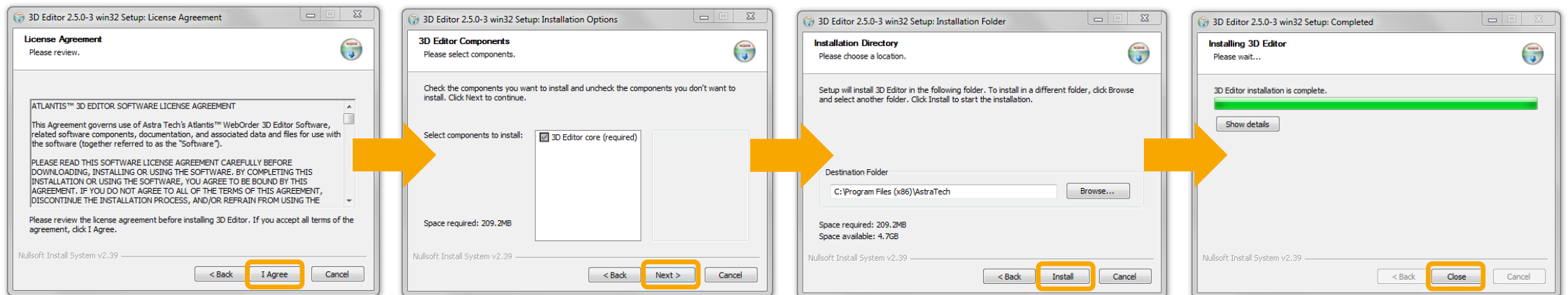
//C J Runeson

To begin using Atlantis Editor, you must download and install the Atlantis Editor plugin. If prompted, click "Run" to install. Otherwise, locate and run the saved file when the download is complete.

With this version of Google Chrome, you must add the Atlantis Editor Launcher to Chrome in order to use Atlantis Editor.

# Installation

- Click **I Agree** to begin the installation process, then on **Next** and finally on **Install**
- When the installation is complete, click **Close** and go back to Atlantis WebOrder to begin using Atlantis Editor



BACK

FORWARD

MENU

# Installation

## - Movie

DENTSPLY Implants


ATLANTIS™  
WebOrder

Log out | Contact us


Latest news

Atlantis® CustomBase solution

- Now possible to edit the material junction/margin in Atlantis WebOrder and Atlantis Editor



Patient-specific design



English

Orders

My account

Design profiles

Preferences

Help

Orders

Create order

Search

Advanced »

← Previous 1 2 Next »

Order ID	Order reference	Product type	Profile name	Prescriber	Units	Submit date	Materials received	Due date	Status	Case number	Atlantis Digital File	Action
2031917	Test android	Abutment			2	2017-11-02	2017-11-02	2017-12-13	HOLD for design approval	101440941		Later order
1994323	2003388	Abutment		Education Germany	1	2017-09-22	2017-09-22	2017-12-19	HOLD reviewing your comments	101411121		
1939907	CustomBase Ankylos (LO)	Abutment			1	2017-07-20	2017-07-20	2017-12-15	HOLD for design approval	101377299		Later order
1939903	cementedATIS EV 4.2 (LO)	Abutment			1	2017-07-20	2017-07-20	2017-12-15	HOLD for design approval	101377296		Later order
1909827	32488750	Abutment		Gozin Cassandra	2	2017-06-15	2017-06-15	2017-12-13	HOLD for design approval	101354281		Later order
1908503	32488522	Abutment		Gozin Cassandra	2	2017-06-14	2017-06-14	2017-12-14	HOLD for design approval	101353408		Later order
1837000	custom base cut-back	Abutment			1	2017-03-30	2017-03-30	2017-12-13	HOLD for design approval	1970025		Later order
1745740	Full-contour crown	Abutment			1	2016-12-19	2016-12-20	2017-12-13	HOLD for design approval	1901218		Later order
1606029	CustomBase Full con	Abutment		juliette mount	1	2016-07-11	2016-07-11	2017-12-18	HOLD for design approval	1809685		Later order
1520279	Clinic demo order	Abutment		Education Germany	1	2016-04-21	2016-04-21	2017-12-13	HOLD reviewing your comments	1774431		Later order
1383047	Conus abu overdentu	Abutment		C J Runeson	4	2015-11-17	2015-11-17	2017-12-12	HOLD for design approval	1727234		Later order
1303043	Full-back crown	Abutment		C J Runeson	1	2015-11-17	2015-11-17	2017-12-12	HOLD for design approval	1727234		Later order

BACK

FORWARD

MENU

# Chapter 1. Introduction

## Using Google Chrome

BACK

FORWARD

MENU

# Using Google Chrome

In the newer versions of the Google Chrome web browser, add-ons are no longer supported. Since Atlantis Editor functions as an add-on, the software needs to be installed as a “Chrome extension”

- If your version of Chrome is affected, a green box will appear in Atlantis WebOrder, when you try to view/edit a case
- Click on the **Atlantis Editor Launcher** link in the box to add the new Chrome extension:

With this version of Google Chrome, you must add the [Atlantis Editor Launcher](#) to Chrome in order to use Atlantis Editor.

Order Data & Design Preferences

Order Date: 2017-03-30

Mandibular	Implant type	FLO™	Restoration type	Abutment material	Emergence width	Emergence shape	Margin position	B/F	D	M	L	R/S for Ti	Parallel	Abutments
35	Dentsply Sirona OsseoSpeed 4.5, 5.0 - Lilac	C-03	Screw-retained Atlantis CustomBase	Gold-shaded titanium	Contour tissue	Concave	Use subgingival depth	1.0	0.75	0.75	0.5	<input checked="" type="checkbox"/>		P1

Atlantis Crowns	Tooth	Crown type	Crown material	B/F	D	M	L	O
	35	Screw-retained Atlantis CustomBase, Cut-back	Zirconia - shade 14T	1.0	1.0	1.0	1.0	1.0

Special Instructions

DO NOT APPROVE!!

Test case for demo purposes.

//C J Runeson

To begin using Atlantis Editor, you must download and install the Atlantis Editor plugin. If prompted, click "Run" to install. Otherwise, locate and run the saved file when the download is complete.

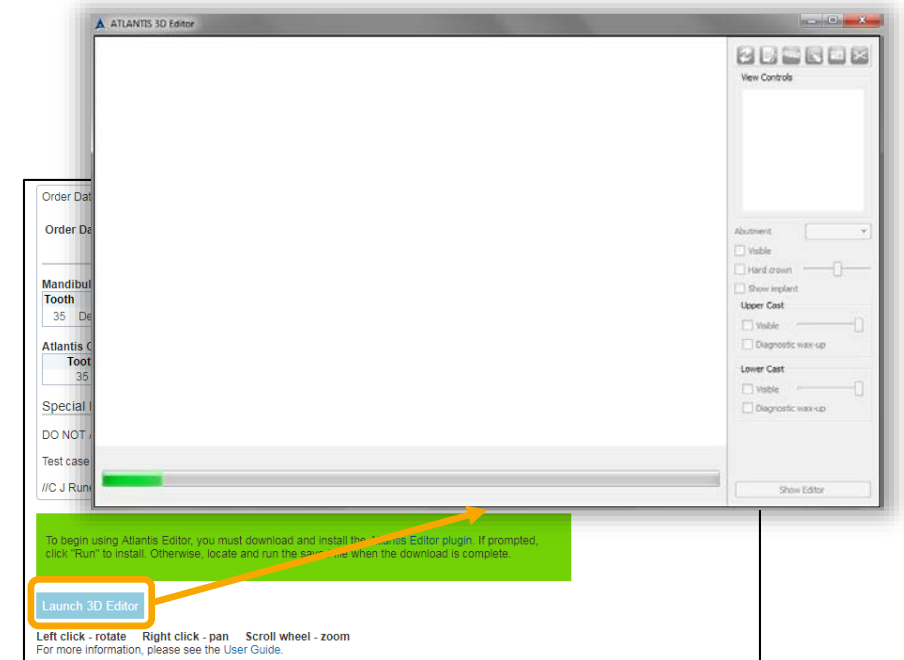
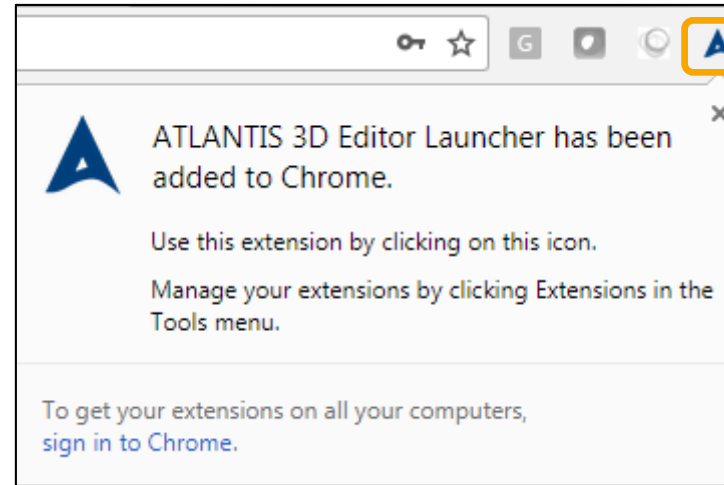
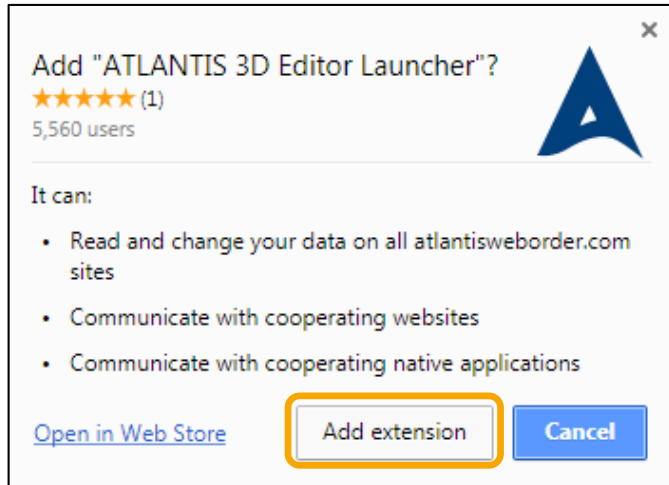
With this version of Google Chrome, you must add the Atlantis Editor Launcher to Chrome in order to use Atlantis Editor.

Note: This setup is only required once for each computer



# Using Google Chrome

- Click on **Add extension** in the Add to Chrome window
  - Once added, the Atlantis icon will appear in the top right corner of your Chrome web browser
- To begin using Atlantis Editor, click on the blue **Launch Editor** button
  - This will load the case you want to view/edit in a new window



# Using Google Chrome

## - Movie

Order Date: 2017-03-30

Mandibular

Tooth	Implant type	FLO™	Restoration type	Abutment material	Emergence width	Emergence shape	Margin position	B/F	D	M	L	R/S for Ti	Parallel Abutments
35	Dentsply Sirona OsseoSpeed 4.5, 5.0 - Lilac	C-03	Screw-retained Atlantis CustomBase	Gold-shaded titanium	Contour tissue	Concave	Use subgingival depth	1.0	0.75	0.75	0.5	<input checked="" type="checkbox"/>	P1

Atlantis Crowns

Tooth	Crown type	Crown material	B/F	D	M	L	O
35	Screw-retained Atlantis CustomBase, Cut-back	Zirconia - shade 14T	1.0	1.0	1.0	1.0	1.0

Special Instructions

DO NOT APPROVE!!

Test case for demo purposes.

//C J Runeson

To begin using Atlantis Editor, you must download and install the Atlantis Editor plugin. If prompted, click "Run" to install. Otherwise, locate and run the saved file when the download is complete.

With this version of Google Chrome, you must add the Atlantis Editor Launcher to Chrome in order to use Atlantis Editor.

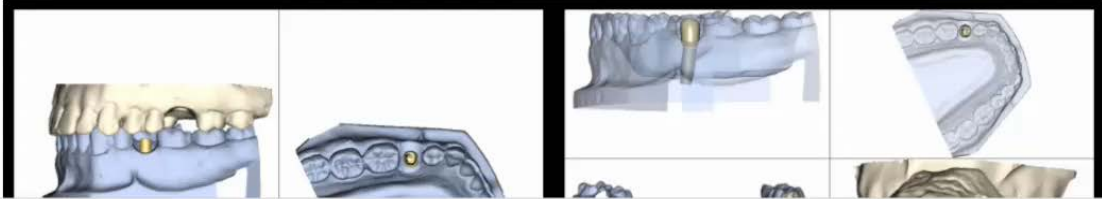
Left click - rotate   Right click - pan   Scroll wheel - zoom

For more information, please see the [User Guide](#).

Your action is required. Please review posted images and grant your design approval.

Comments and Images

Image group 1



3deditor\_latest (15).exe

3deditor\_latest (14).exe

Show all

BACK

FORWARD

MENU

# Chapter 2.

# Viewing feature

BACK

FORWARD

MENU

Chapter 2.

# Viewing feature

## Controls and toolbar

BACK

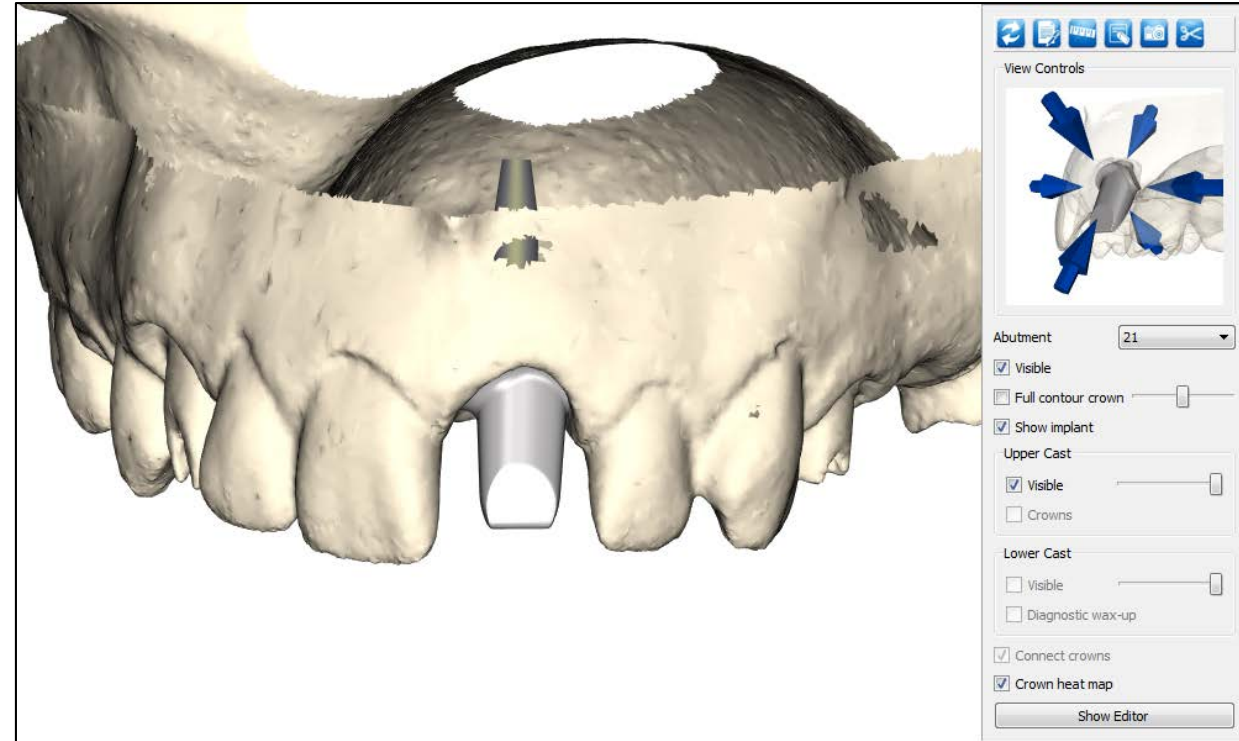
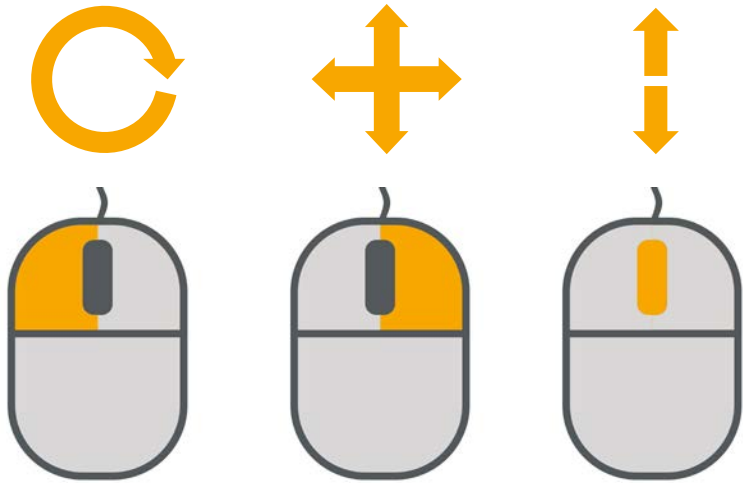
FORWARD

MENU

# Controls and toolbar

Once you have installed the support files for Atlantis Editor, you are ready to begin. The initial display will show your Atlantis abutment(s) in the cast, in viewing mode only

- To rotate the cast, left click mouse and hold
- To pan (left/right/up/down), right click the mouse and hold
- To zoom (in and out), scroll wheel on the mouse

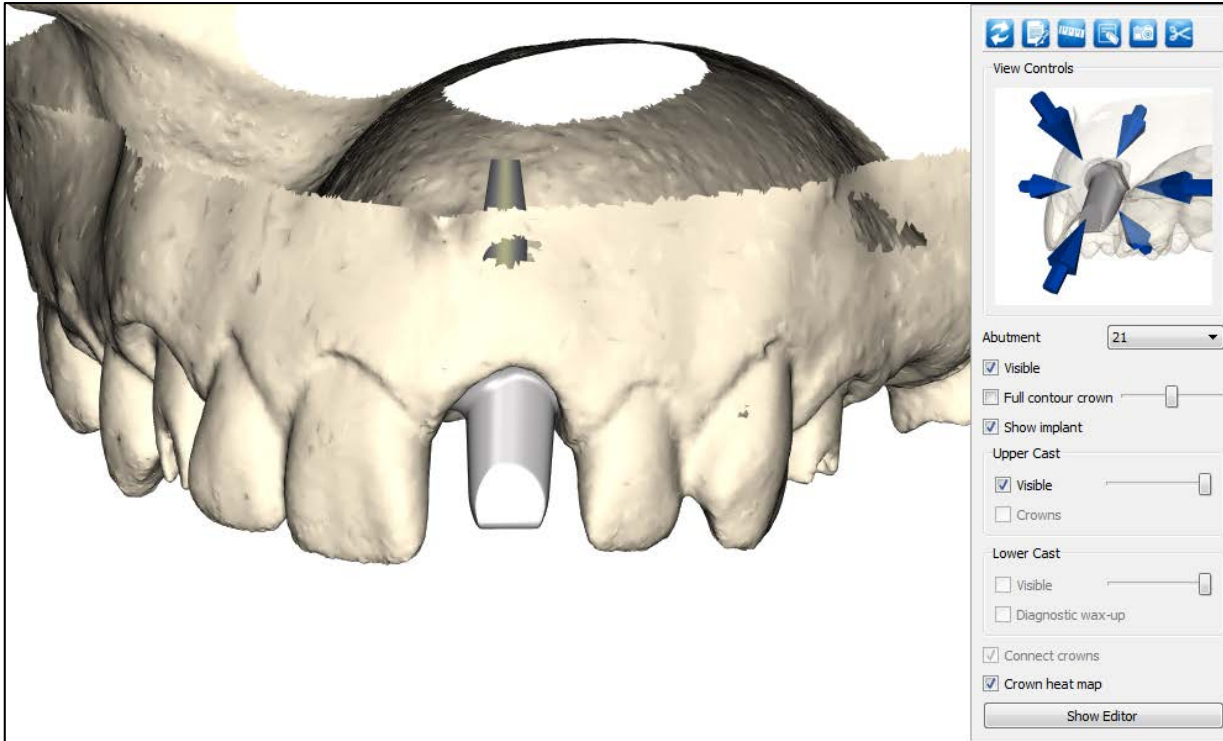


BACK

FORWARD

MENU

# Controls and toolbar



## Toolbar

Abutment selection and controls. Click on the arrows to view the abutment from any direction

Abutment/crown visibility controls whether the currently selected abutment and its associated implant are visible. This can be changed on a per abutment basis

Cast visibility allows upper and lower casts to be turned on and off, or made partially translucent with the sliders. If you sent a diagnostic wax-up with your order, it can also be viewed

Enables the editing feature

BACK







FORWARD

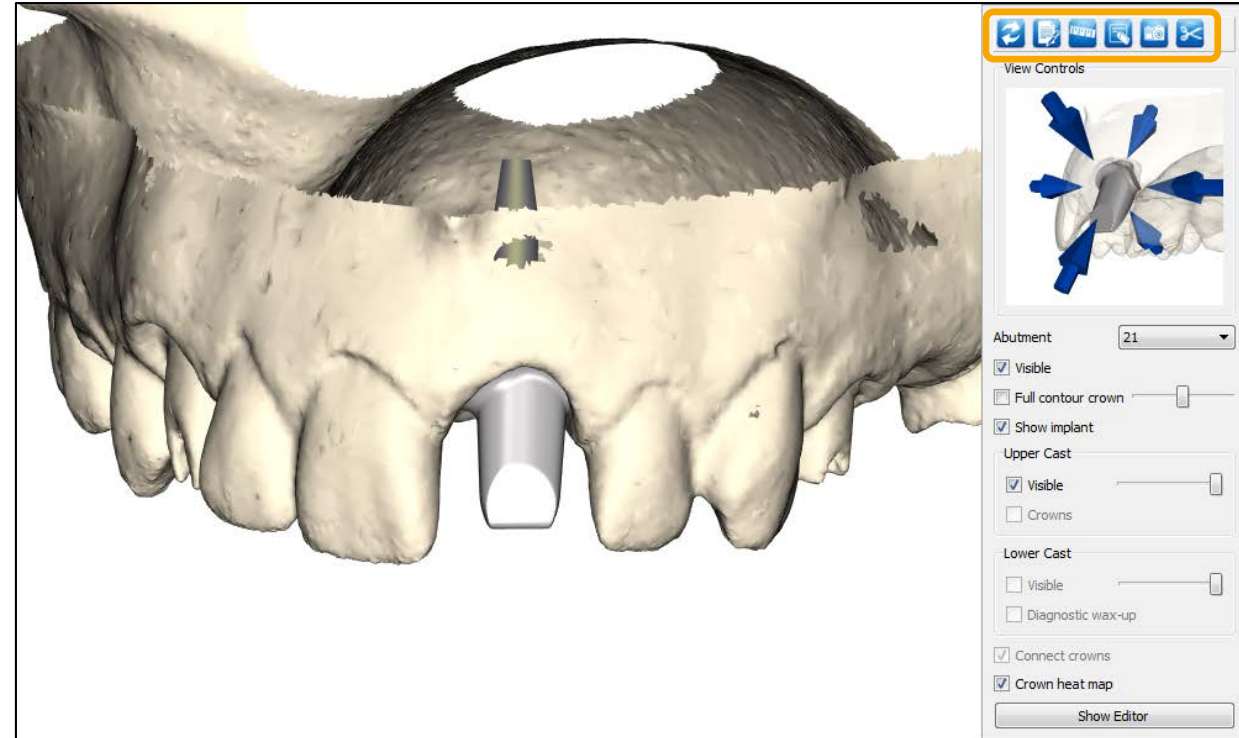
MENU



# Controls and toolbar

## Toolbar

-  Reset: Resets view to default
-  Notes: Inserts a reference point for a note anywhere in the main window (on/around the image)
-  Ruler: Displays the measurement in millimeters between any two points that are clicked on
-  Eraser: Clears all note, reference points, and measurements
-  Camera: Takes a screenshot to be sent to the Abutment Design Technician working on your order. Use with notes or ruler to send an image with reference points or measurements
-  Cut-away: Virtually cuts away the part of the cast you are viewing for easier visualization



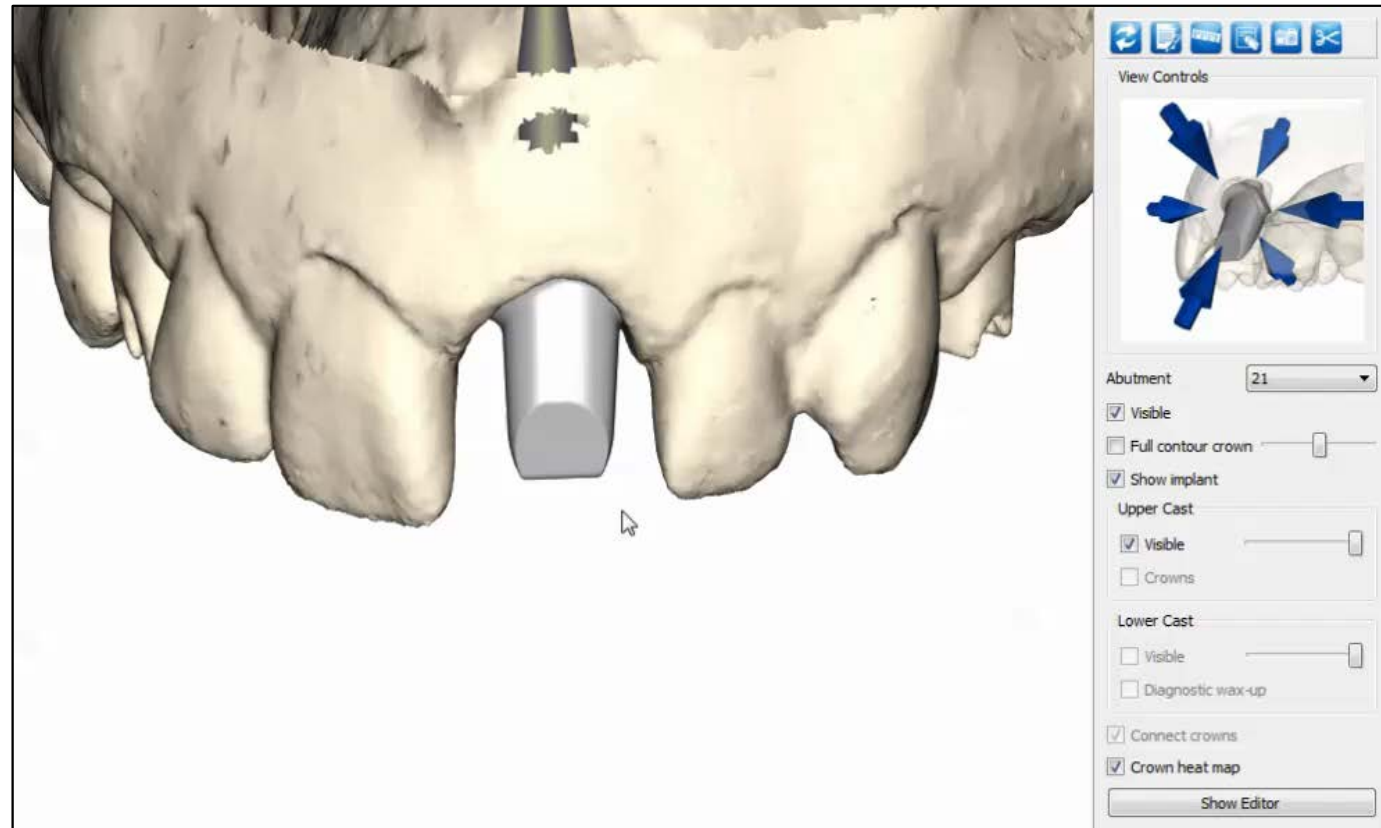
BACK

FORWARD

MENU

# Controls and toolbar

## - Movie



BACK

FORWARD

MENU

Chapter 2.

# Viewing feature

## Virtual crown

BACK

FORWARD

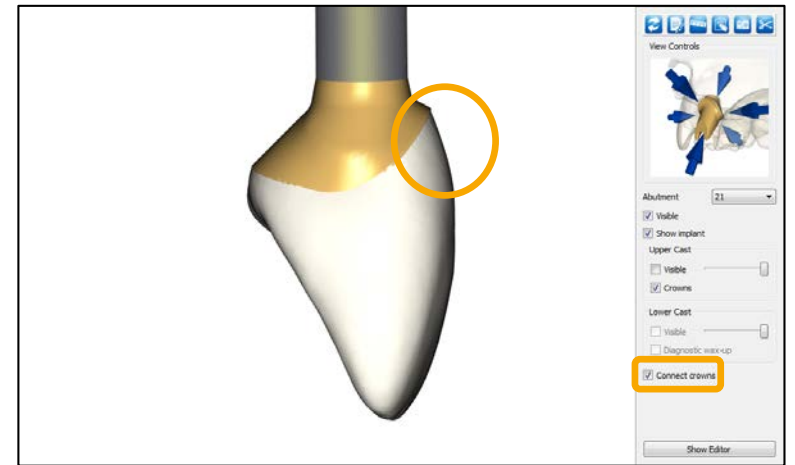
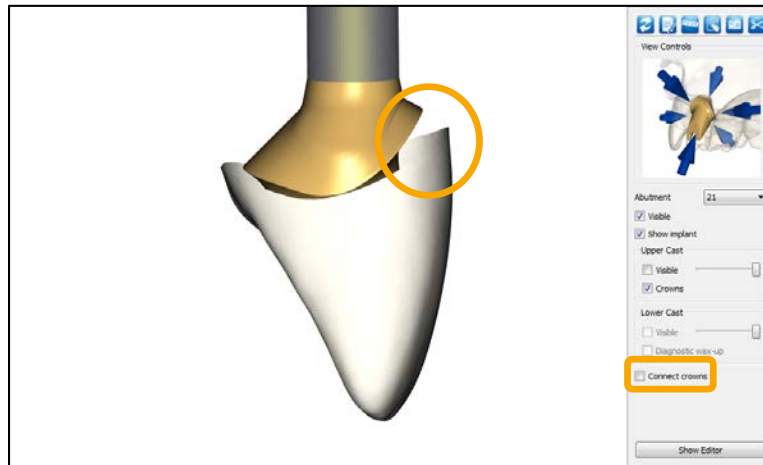
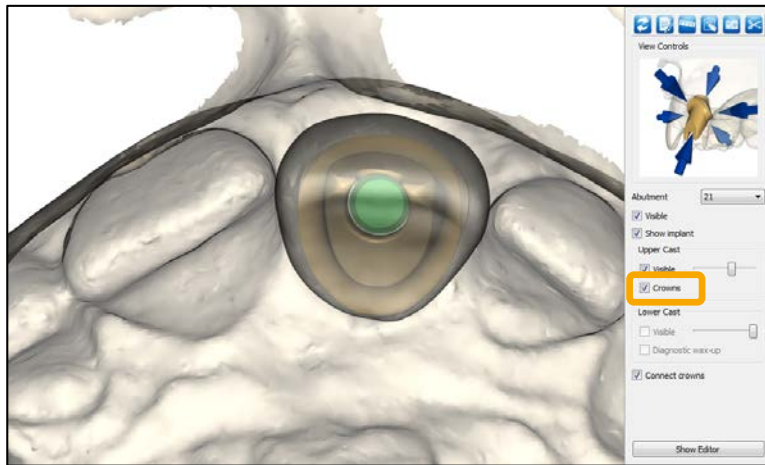
MENU

# Virtual crown

The virtual crown tool allows you to visualize the position of the Atlantis Abutment in relation to the crown

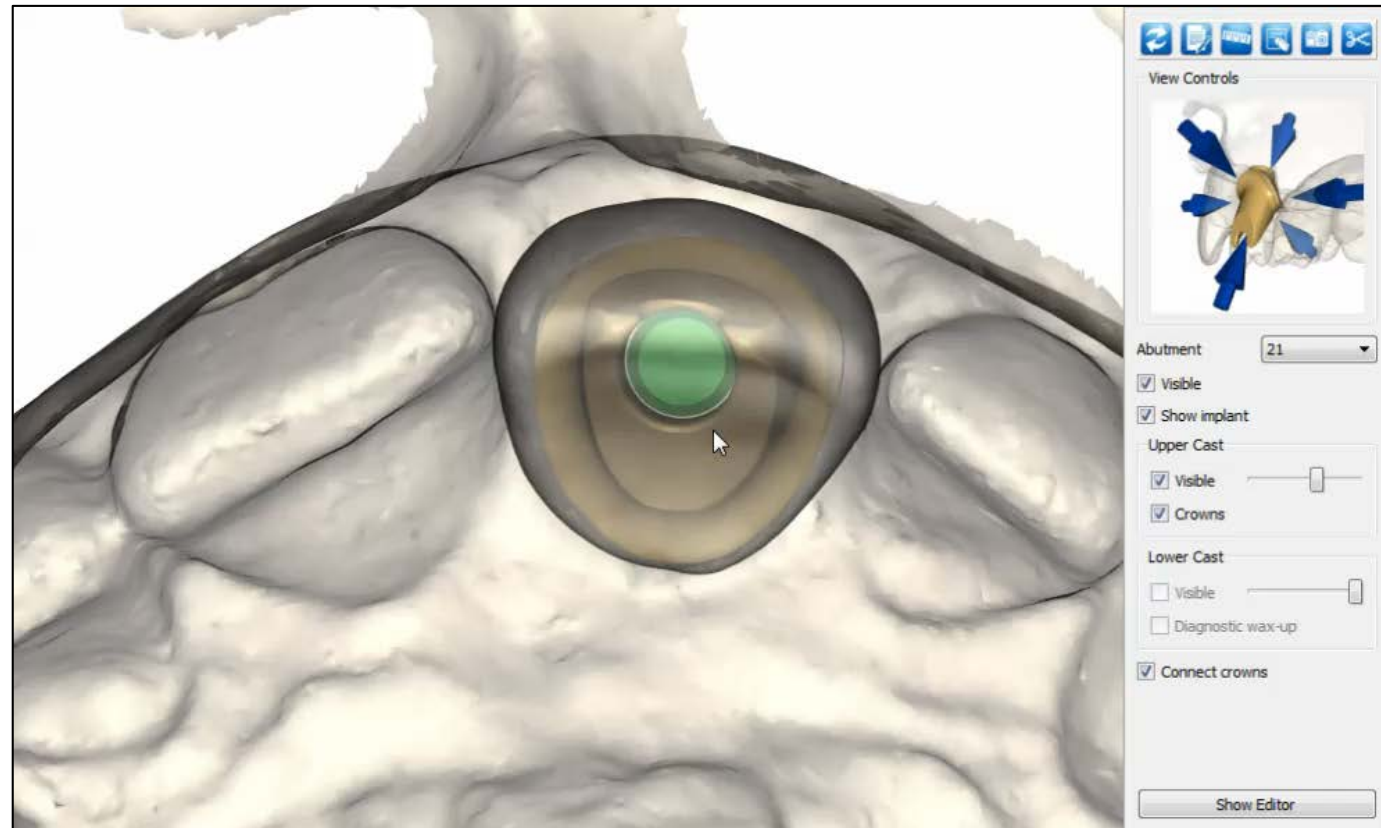
- Connect Crown to margin function, allows you to easily evaluate the emergence profile compared to the edentulous space

Note: The virtual crown is only available for cement-retained restorations using Atlantis Abutments. The virtual crowns will not show for cases where a wax-up was sent with the case, or when four (4) or more abutments were ordered



# Virtual crown

## - Movie



BACK

FORWARD

MENU

Chapter 2.

# Viewing feature

## Heat map tool

BACK

FORWARD

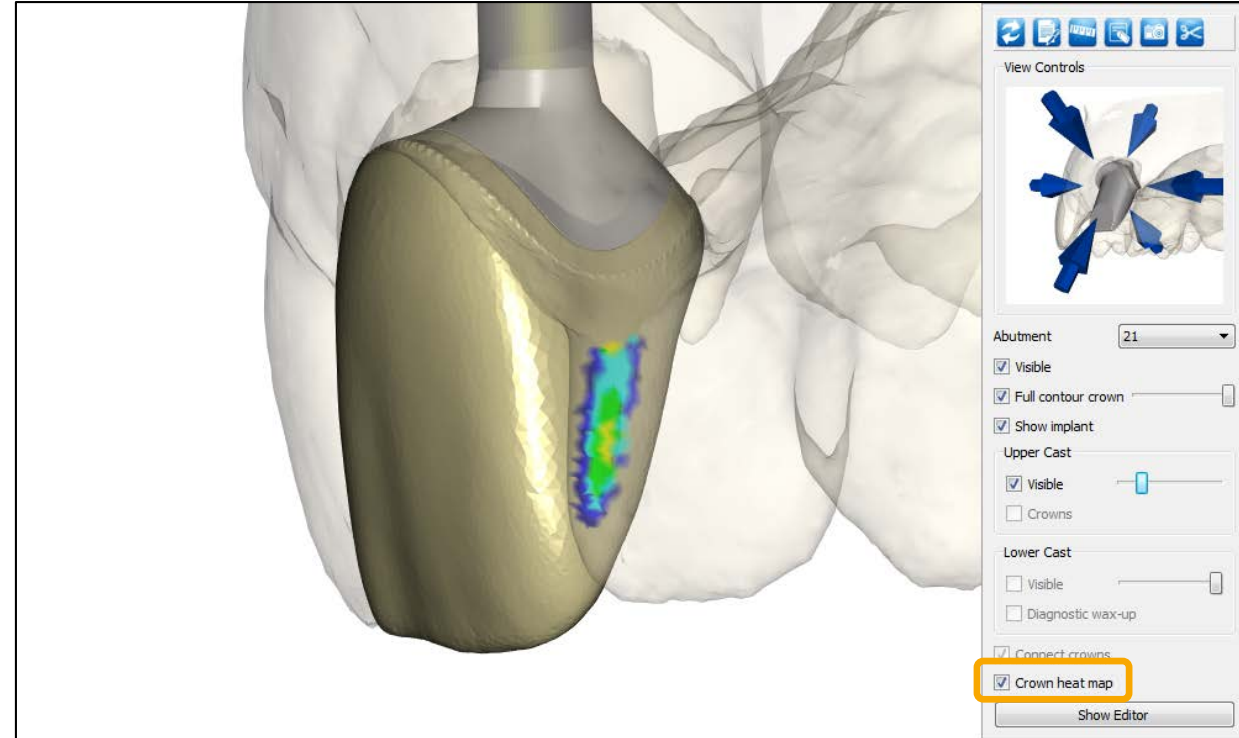
MENU



# Heat map tool

The heat map tool displays different colors depending on the pressure/distance between the full-contour crown and the neighboring teeth

- Red, yellow and green indicates a certain amount of pressure, whereas blue colors indicates a gap
  - Pressure (overlap):
    - > 100  $\mu\text{m}$
    - 100–30  $\mu\text{m}$
    - 30–0  $\mu\text{m}$  (ideal contact)
  - Distance (gap):
    - 0–50  $\mu\text{m}$
    - 50–100  $\mu\text{m}$
    - > 100  $\mu\text{m}$



# Heat map tool

## - Movie



BACK

FORWARD

MENU

Chapter 3.

# Editing: Cement-retained restoration

BACK

FORWARD

MENU

Chapter 3.

Editing: Cement-retained restoration

Atlantis Crown, Cut-back

BACK

FORWARD

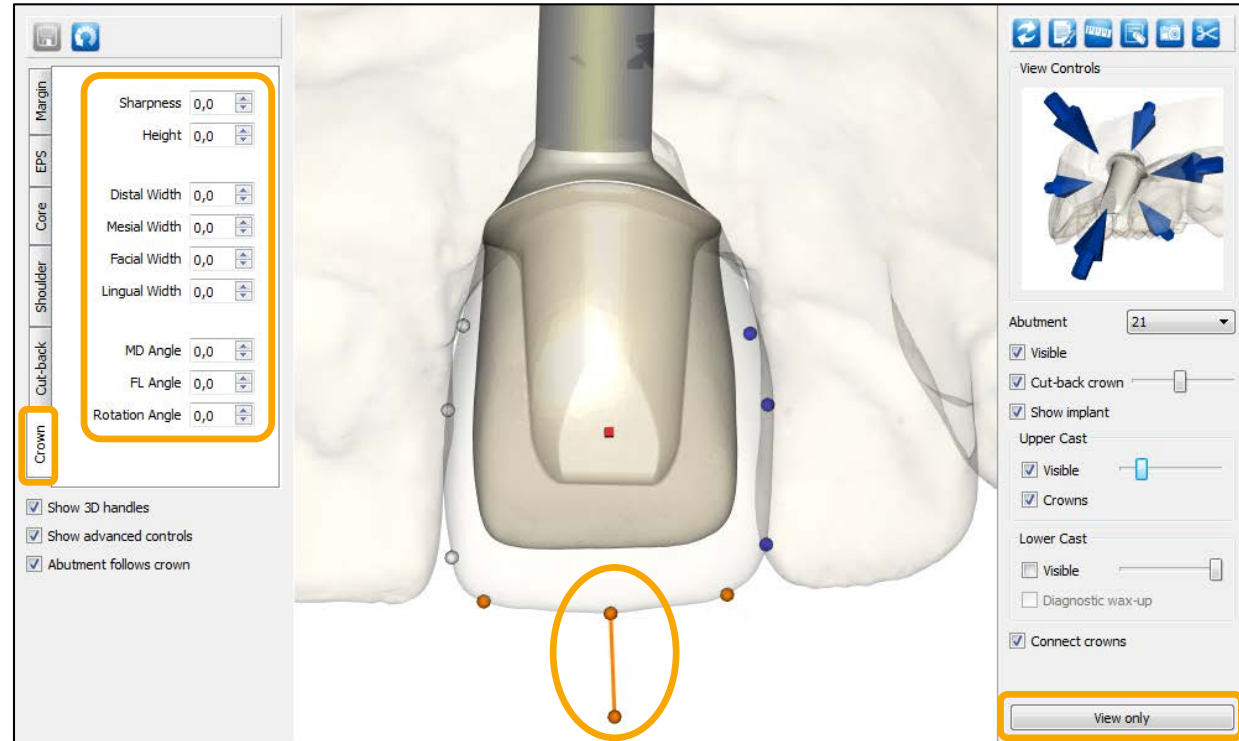
MENU

# Atlantis Crown, Cut-back

Click on **Show Editor**

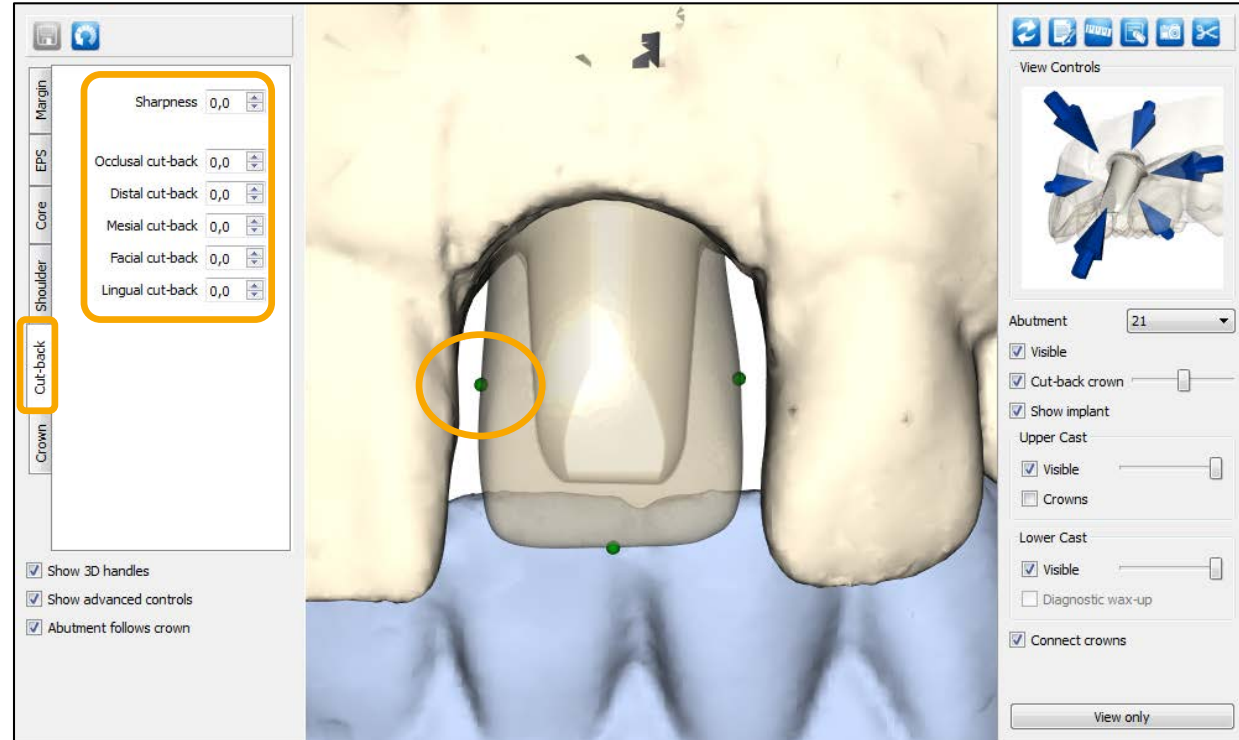
- Begin with adjusting the **virtual crown**
- To edit the virtual crown, the **Crown tab** needs to be enabled
  - With these tools it is possible to change the outer contour of the virtual crown
    - In addition to using the arrows in the menu to the left, you can also use **3D handles** to edit the crown design
      - Different 3D handles will show depending on which view your are using

Note: If “Abutment follows crown” is checked the abutment core will follow the crown changes



# Atlantis Crown, Cut-back

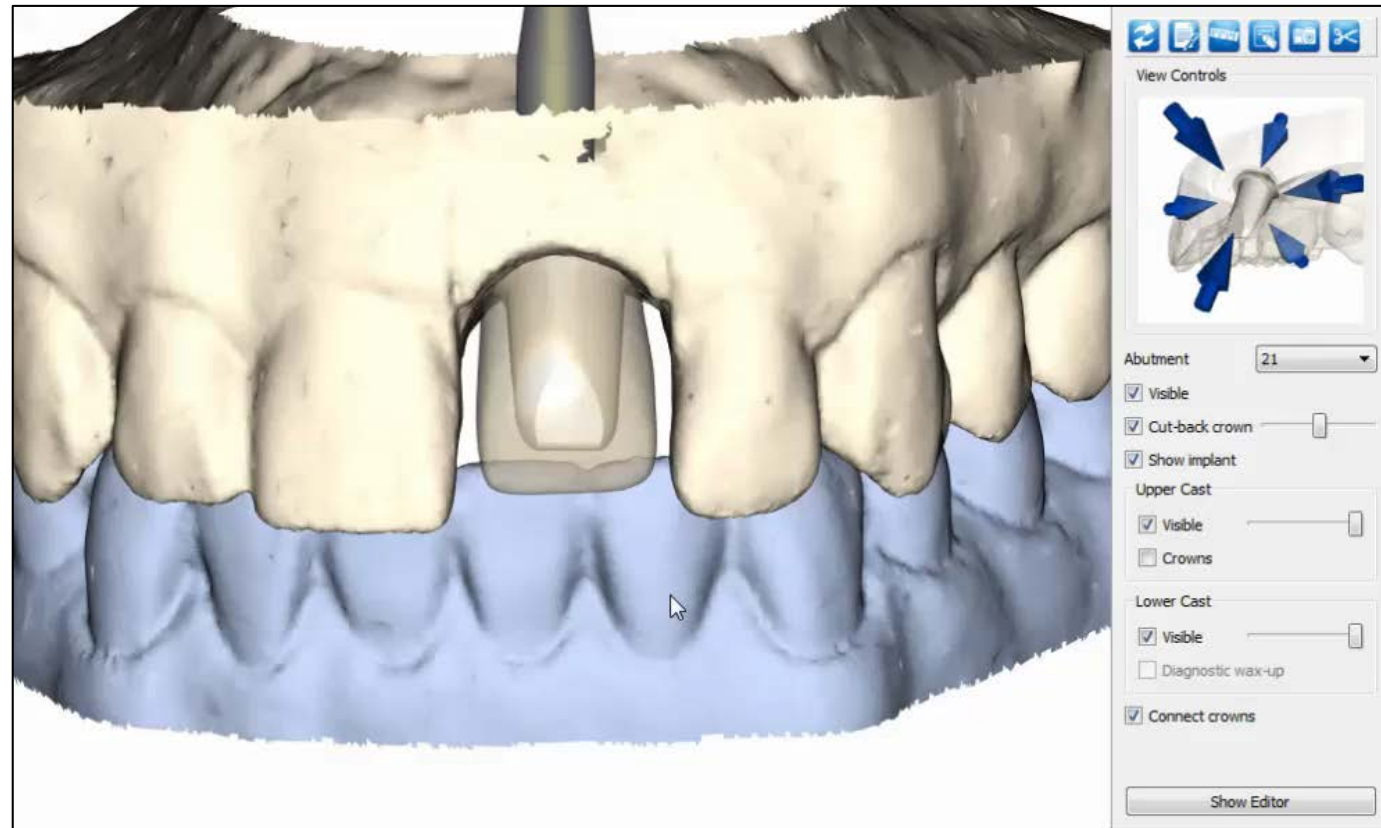
- To adjust the cut-back of the crown, enable the **Cut-back tab**
  - With these tools it is possible to change the cut-back offset of the cut-back crown





# Atlantis Crown, Cut-back

## - Movie



BACK

FORWARD

MENU

Chapter 3.

Editing: Cement-retained restoration

Atlantis Crown, Full-contour

BACK

FORWARD

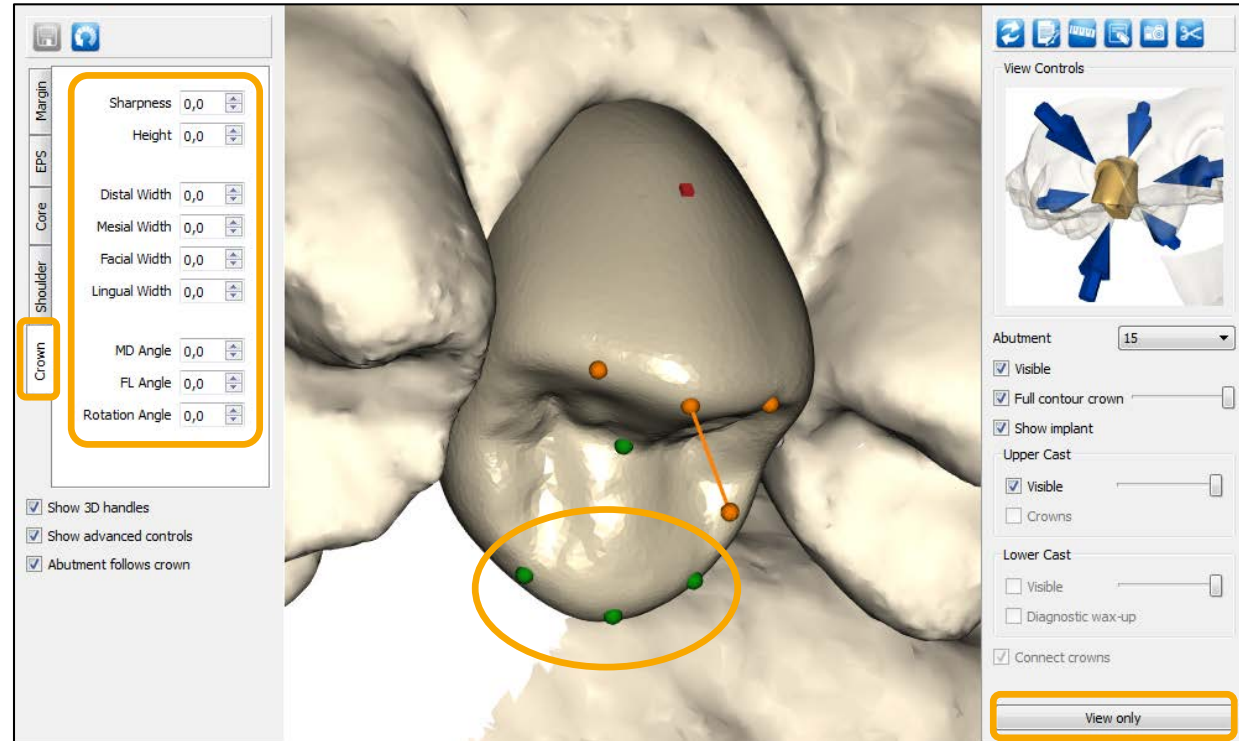
MENU

# Atlantis Crown, Full-contour

Click on **Show Editor**

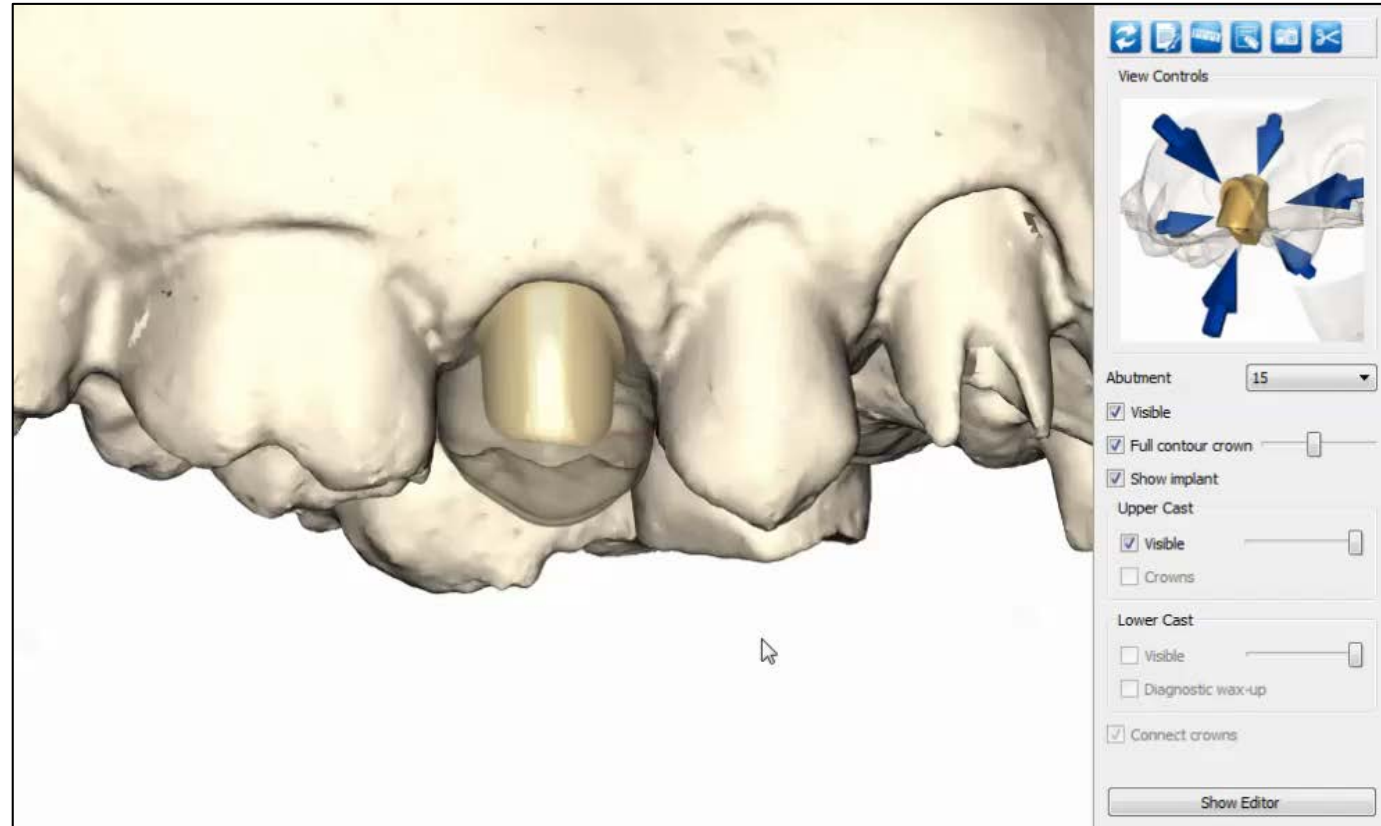
- To edit the full-contour crown, the **Crown tab** needs to be enabled
  - With these tools it is possible to change the outer contour of the full-contour crown
    - In addition to using the arrows in the menu to the left, you can also use **3D handles** to edit the crown design
      - Different 3D handles will show depending on which view your are using

Note: If “Abutment follows crown” is checked the abutment core will follow the crown changes



# Atlantis Crown, Full-contour

## - Movie



BACK

FORWARD

MENU

Chapter 3.

# Editing: Cement-retained restoration

## Atlantis Abutment

BACK

FORWARD

MENU

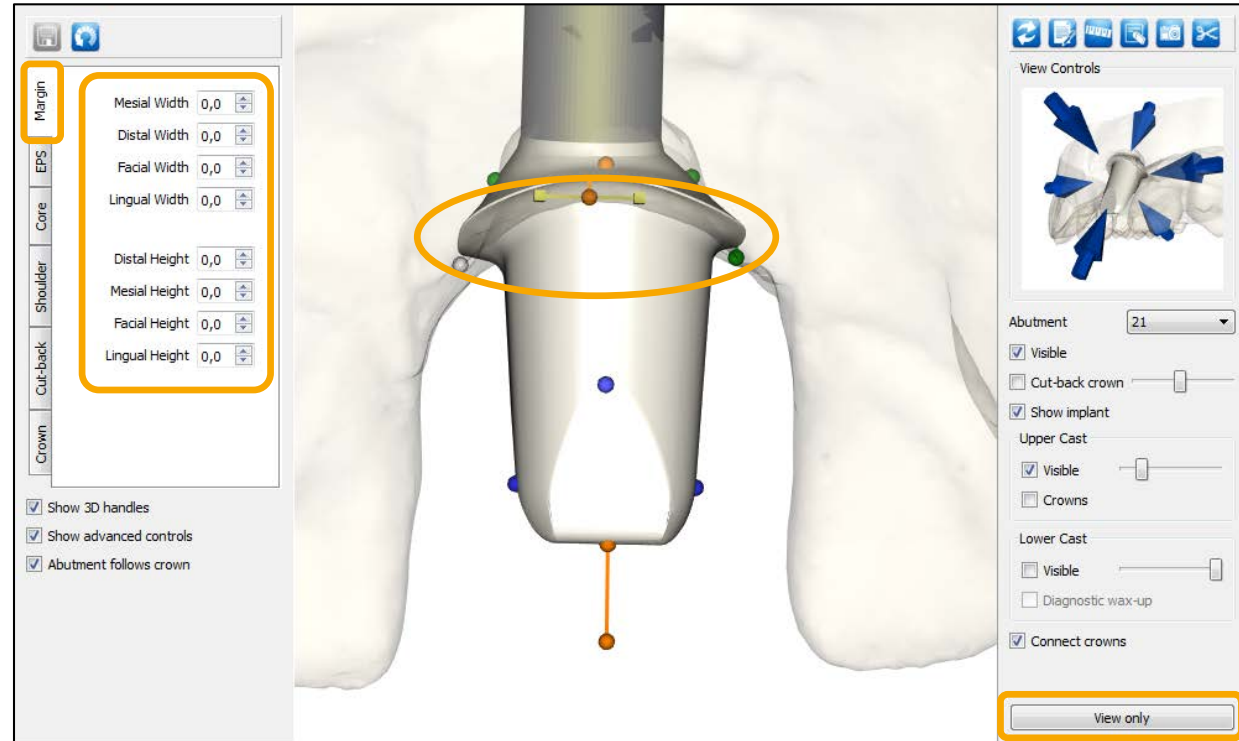
# Atlantis Abutment

Click on **Show Editor**

- To edit the Atlantis Abutment, one of the following four tabs should be enabled:
  - **Margin** – Controls the height and width of the abutment margin
  - EPS
  - Core
  - Shoulder

Note: In addition to using the arrows in the menu to the left, you can also use 3D handles to edit the abutment design

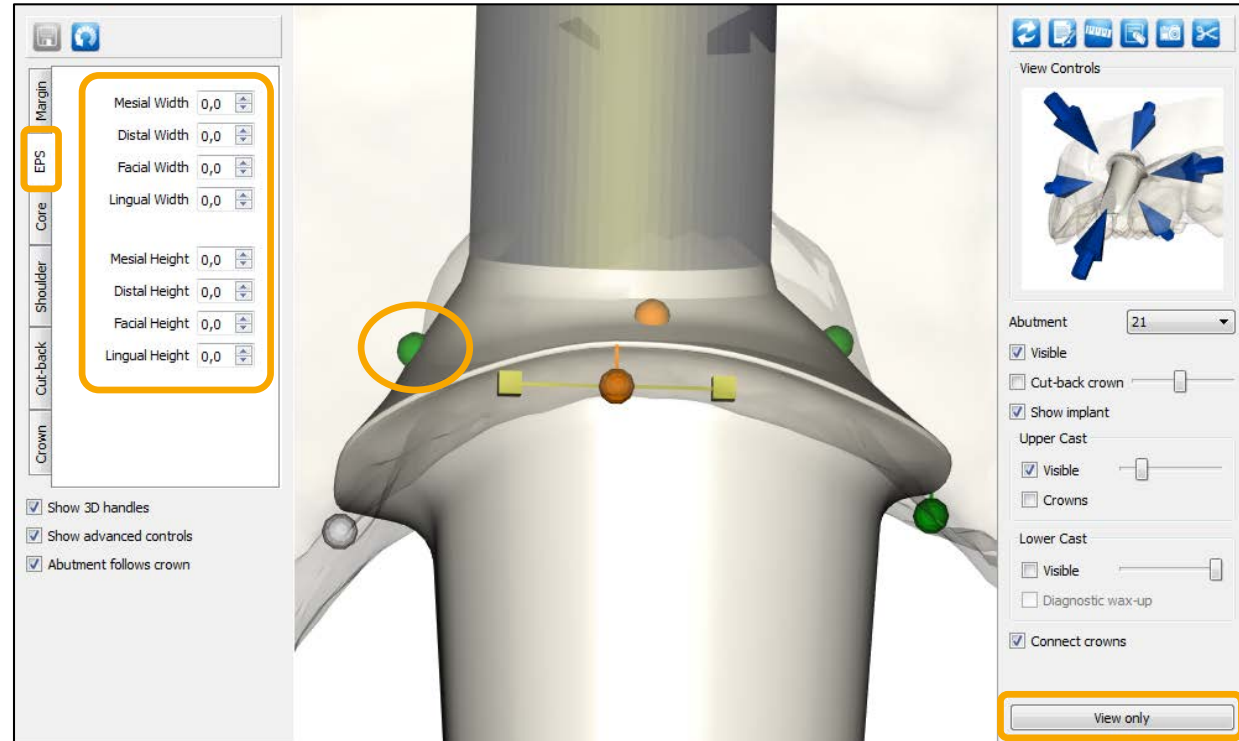
- Different 3D handles will show depending on which view your are using



# Atlantis Abutment

Click on **Show Editor**

- To edit the Atlantis Abutment, one of the following four tabs should be enabled:
  - Margin
  - **EPS** - Controls the height and width of the emergence profile shape
  - Core
  - Shoulder

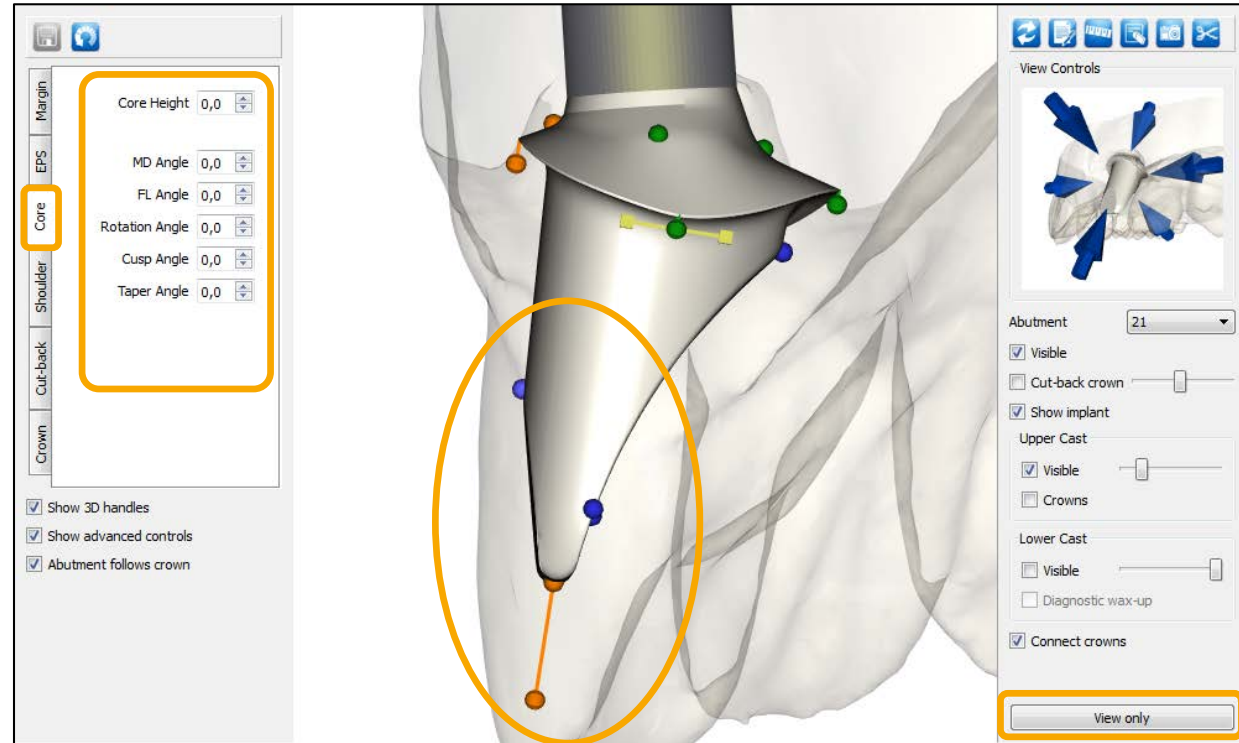




# Atlantis Abutment

Click on **Show Editor**

- To edit the Atlantis Abutment, one of the following four tabs should be enabled:
  - Margin
  - EPS
  - **Core** - Controls the aspects of the abutment design such as core height and angulation. Changes can also be made to the core angle mesial-distal (MD) and facial-lingual (FL). The Core adjustments function also includes options for changes to the core and cusp angles and incisal edge
  - Shoulder

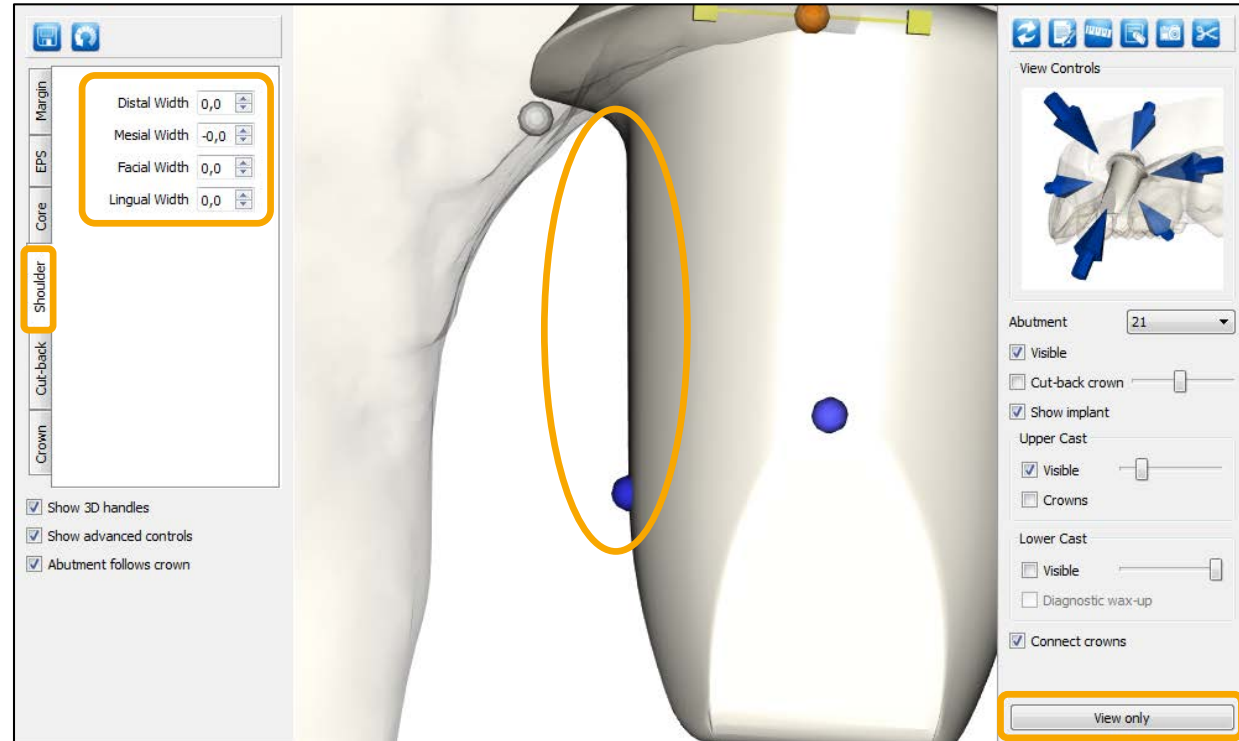




# Atlantis Abutment

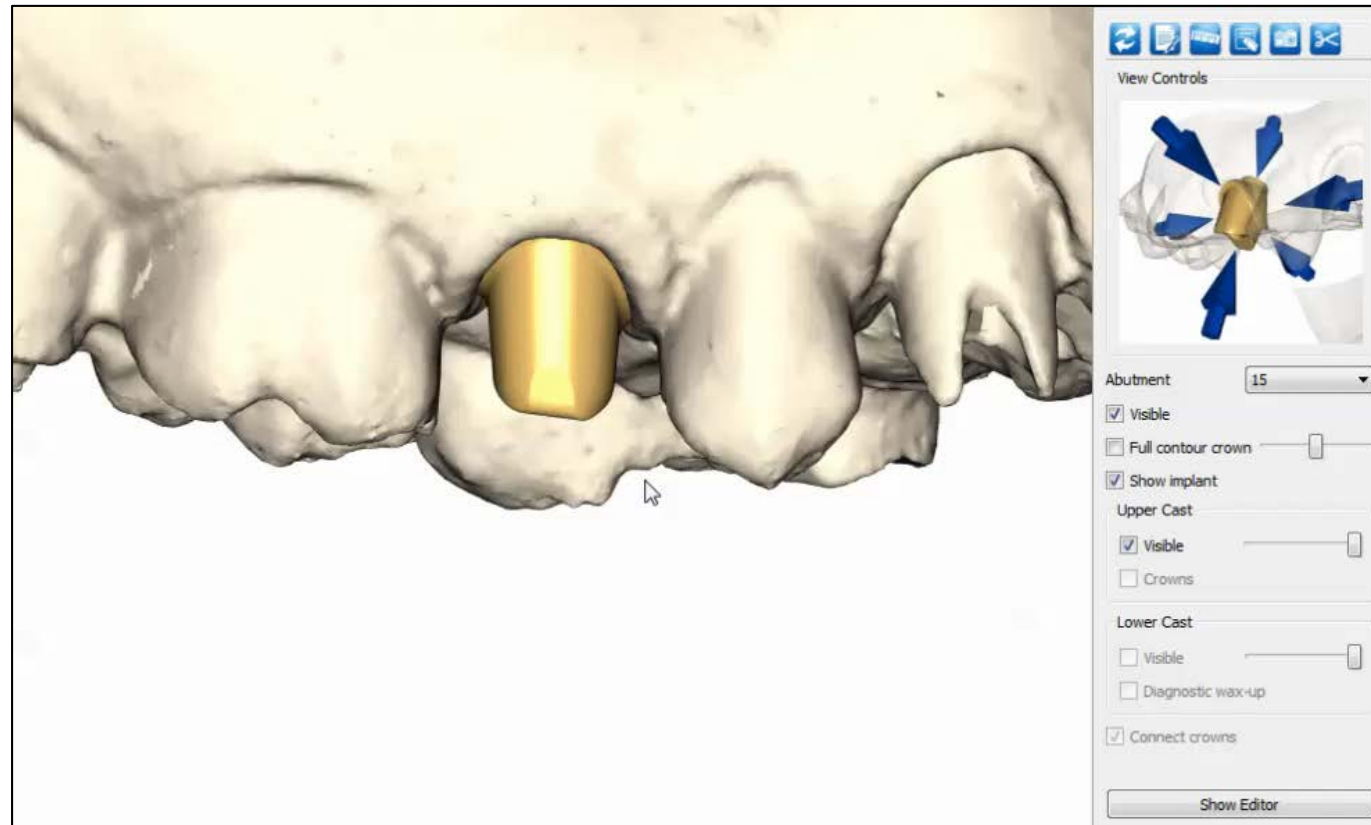
Click on **Show Editor**

- To edit the Atlantis Abutment, one of the following four tabs should be enabled:
  - Margin
  - EPS
  - Core
  - **Shoulder** - Controls the of the abutment shoulders



# Atlantis Abutment

## - Movie



BACK

FORWARD

MENU

Chapter 4.

# Editing: Screw-retained restoration

BACK

FORWARD

MENU

Chapter 4.

Editing: Screw-retained restoration

Atlantis CustomBase: Cut-back Crown

BACK

FORWARD

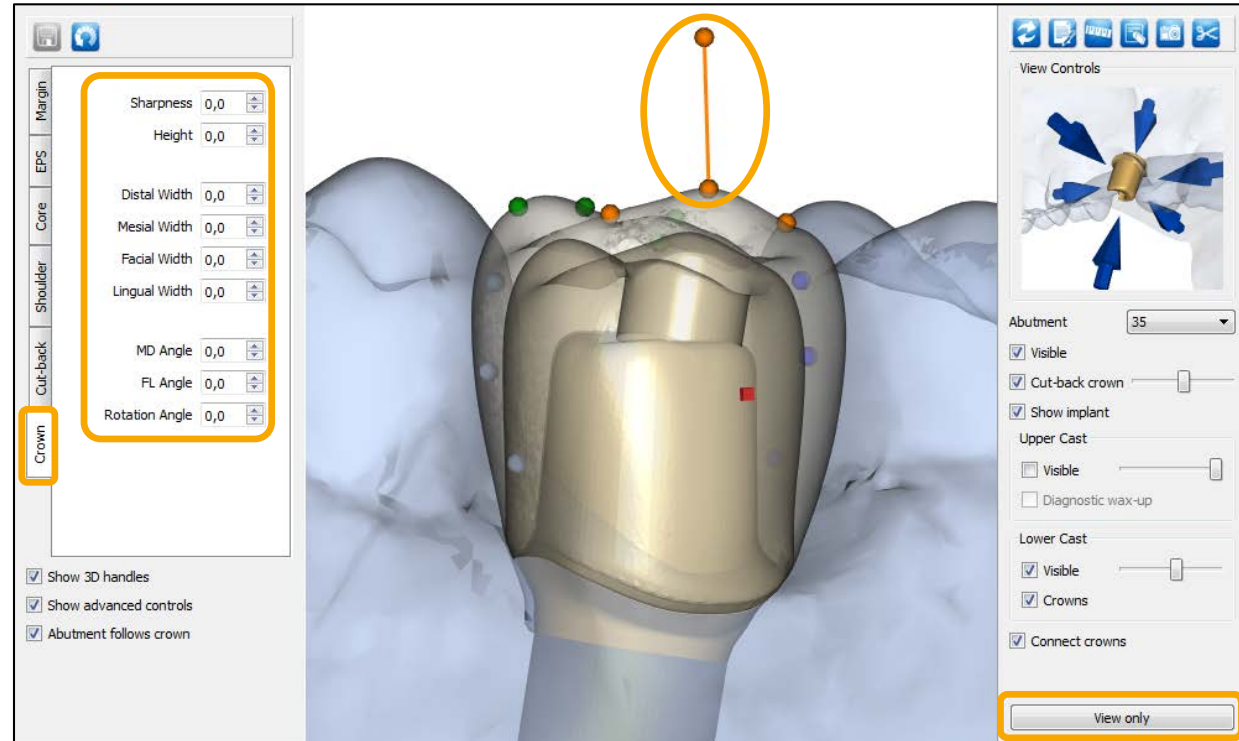
MENU

# Atlantis CustomBase: Cut-back Crown

Click on **Show Editor**

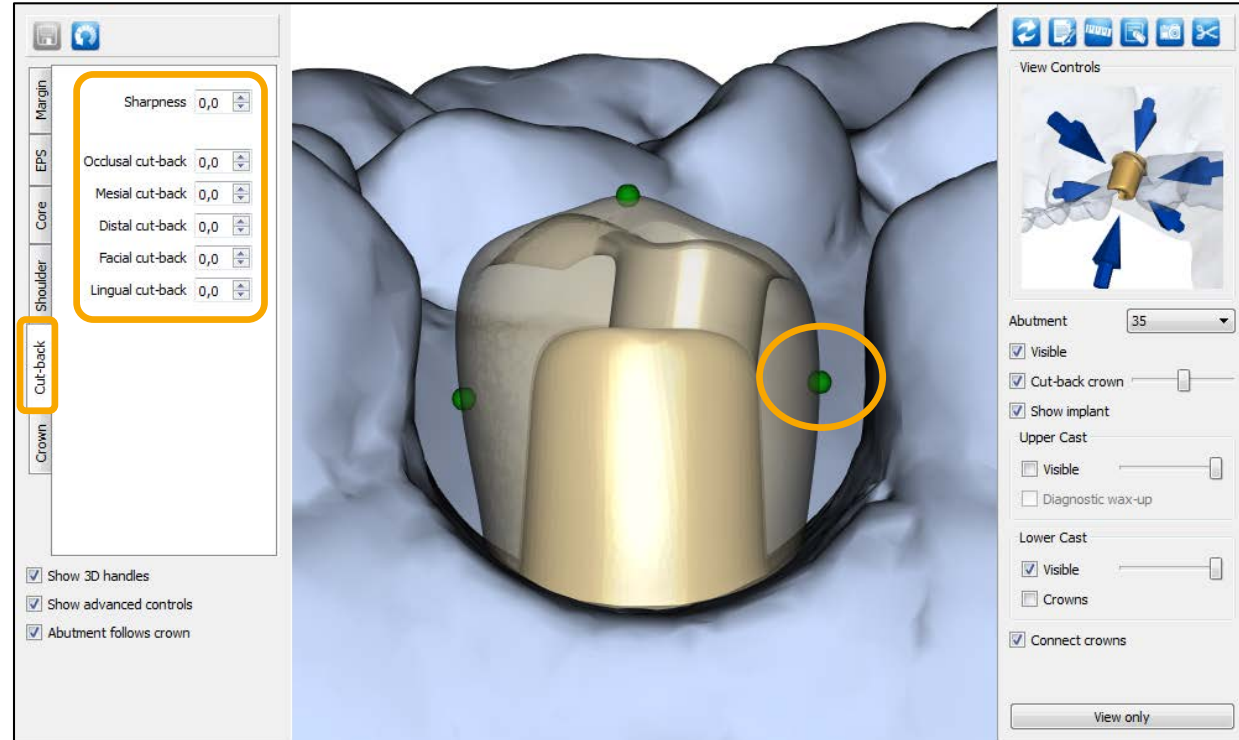
- Begin with adjusting the **virtual crown**
- To edit the virtual crown, the **Crown tab** needs to be enabled
  - With these tools it is possible to change the outer contour of the virtual crown
    - In addition to using the arrows in the menu to the left, you can also use **3D handles** to edit the crown design
      - Different 3D handles will show depending on which view your are using

Note: If “Abutment follows crown” is checked the abutment core will follow the crown changes



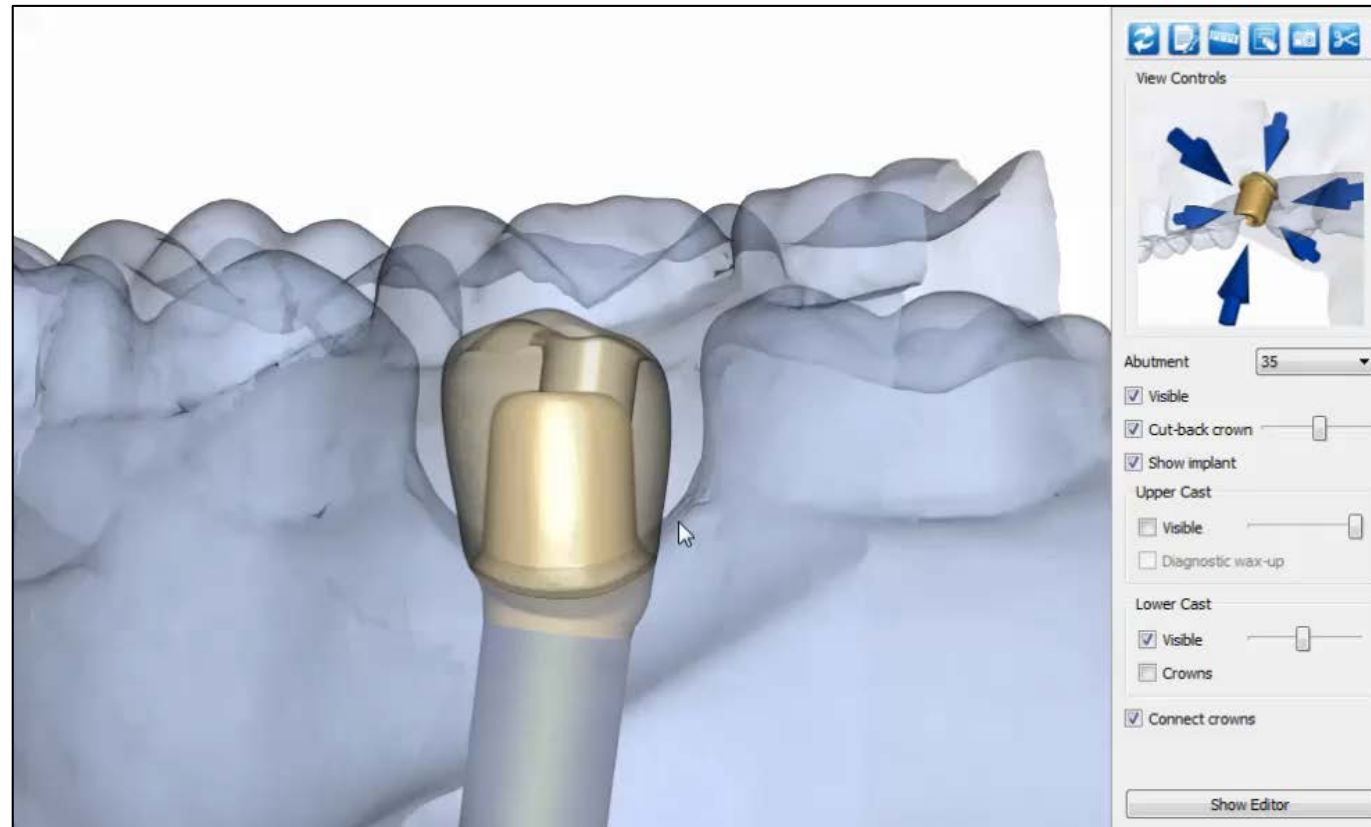
# Atlantis CustomBase: Cut-back Crown

- To adjust the cut-back of the crown, enable the **Cut-back tab**
  - With these tools it is possible to change the cut-back offset of the cut-back crown



# Atlantis CustomBase: Cut-back Crown

## - Movie



BACK

FORWARD

MENU

Chapter 4.

Editing: Screw-retained restoration

Atlantis CustomBase: Full-contour Crown

BACK

FORWARD

MENU

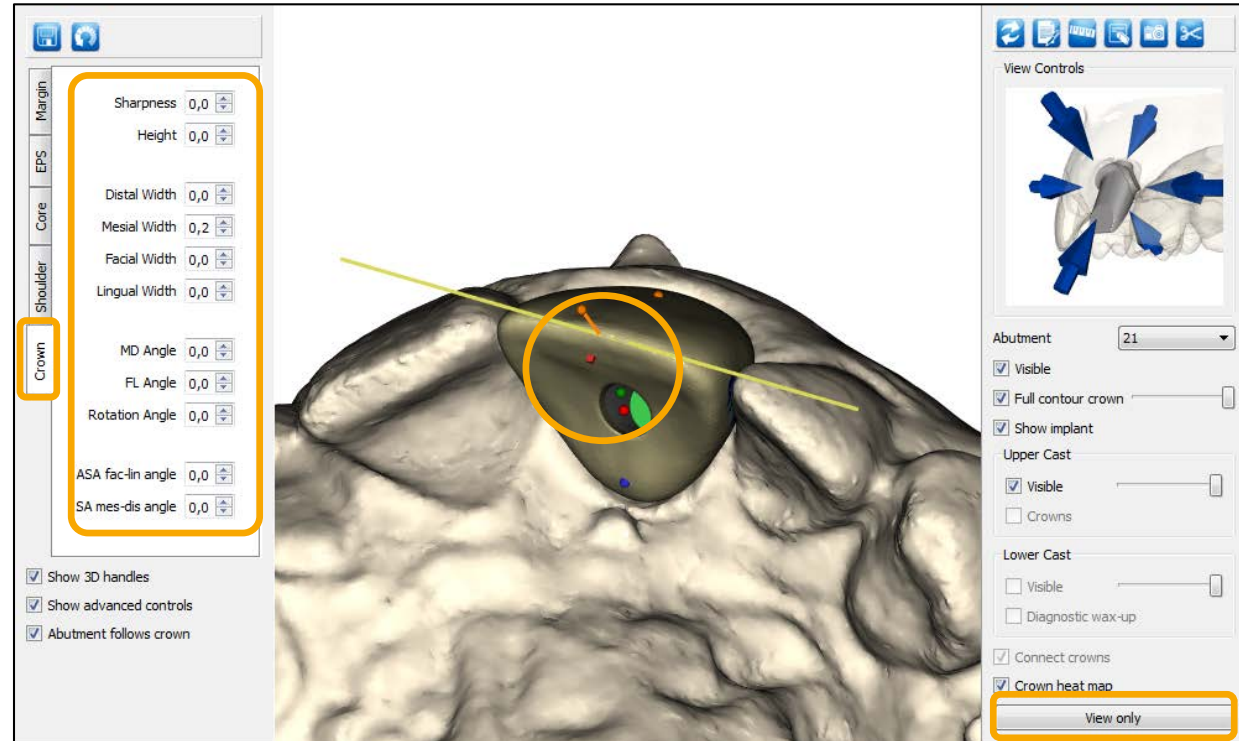


# Atlantis CustomBase: Full-contour Crown

Click on **Show Editor**

- To edit the full-contour crown, the **Crown tab** needs to be enabled
  - With these tools it is possible to change the outer contour of the full-contour crown
    - In addition to using the arrows in the menu to the left, you can also use **3D handles** to edit the crown design
      - Different 3D handles will show depending on which view your are using

Note: If “Abutment follows crown” is checked the abutment core will follow the crown changes



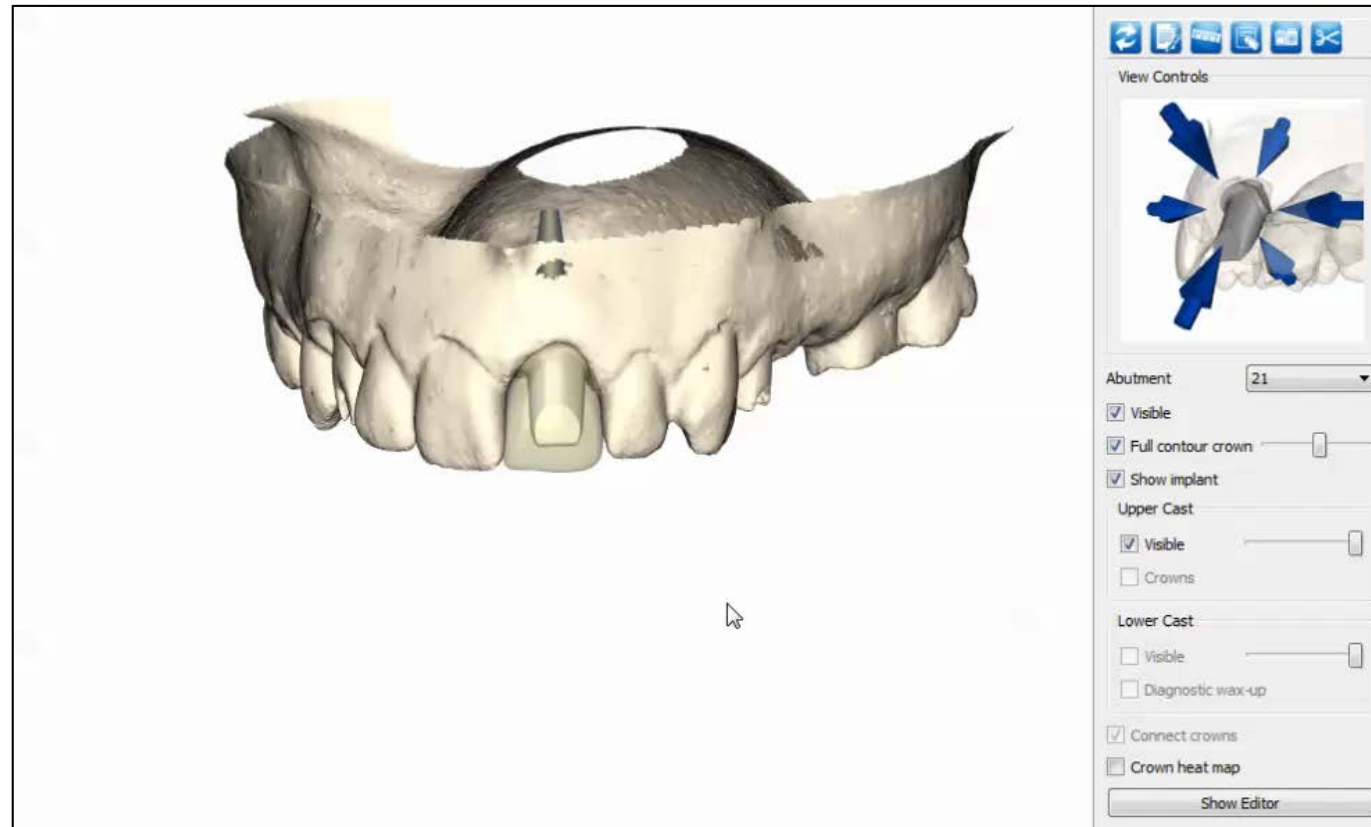
BACK

FORWARD

MENU

# Atlantis CustomBase: Full-contour Crown

## - Movie



BACK

FORWARD

MENU

Chapter 4.

# Editing: Screw-retained restoration

## Atlantis CustomBase: Angulated screw access

BACK

FORWARD

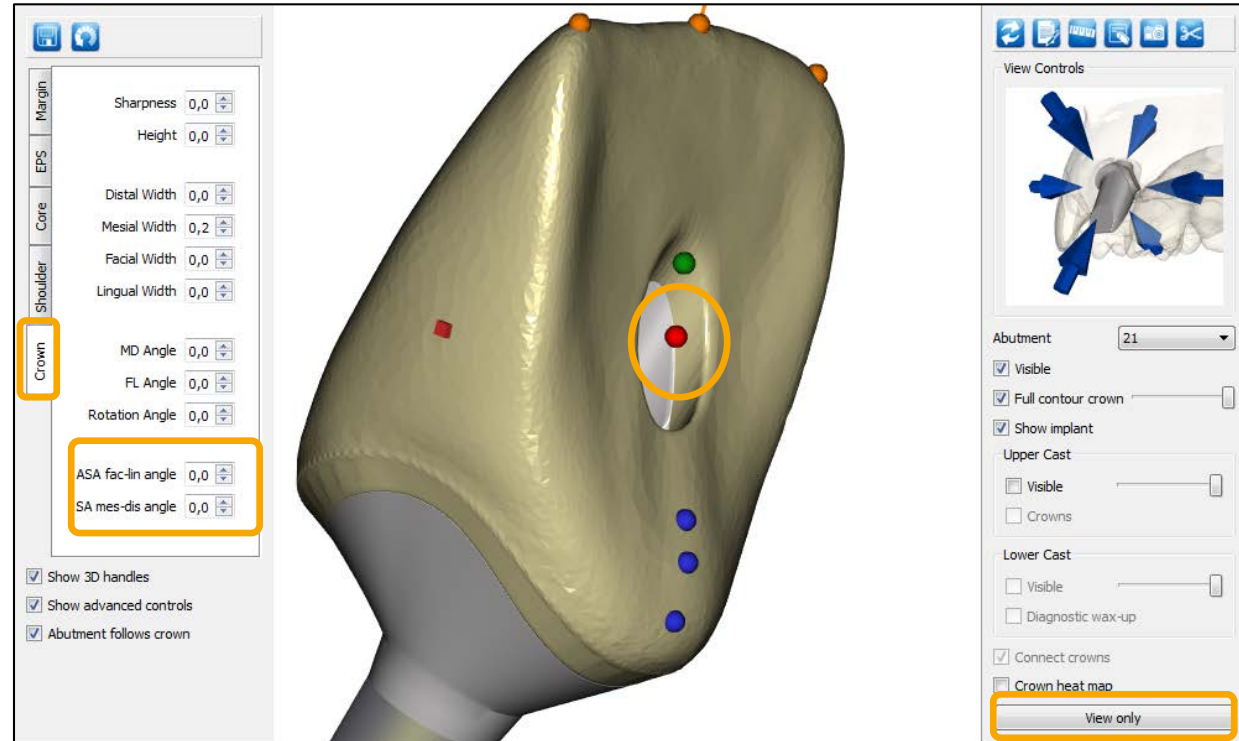
MENU

# Atlantis CustomBase: Angulated screw access

Click on **Show Editor**

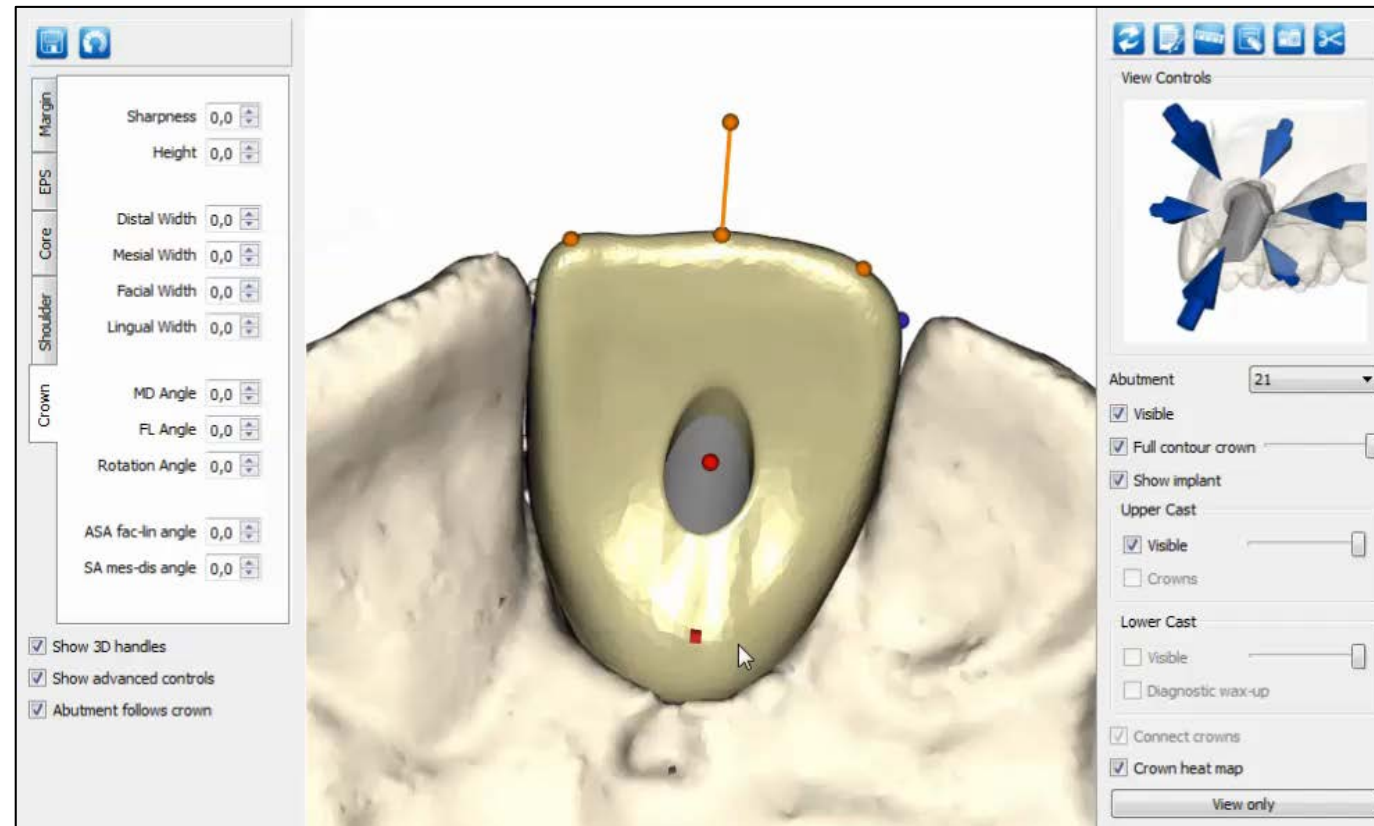
- To alter the angulated screw access in facial – lingual aspect, use **ASA fac-lin angle** arrows
- To alter the angulated screw access in mesial – distal aspect, use **ASA mes-dis angle** arrows

Note: In addition to using the arrows in the menu to the left, you can also use **3D handle** to edit the angulated screw access



# Atlantis CustomBase: Angulated screw access

- Movie



BACK

FORWARD

MENU

Chapter 4.

Editing: Screw-retained restoration

Atlantis CustomBase: Abutment

BACK

FORWARD

MENU

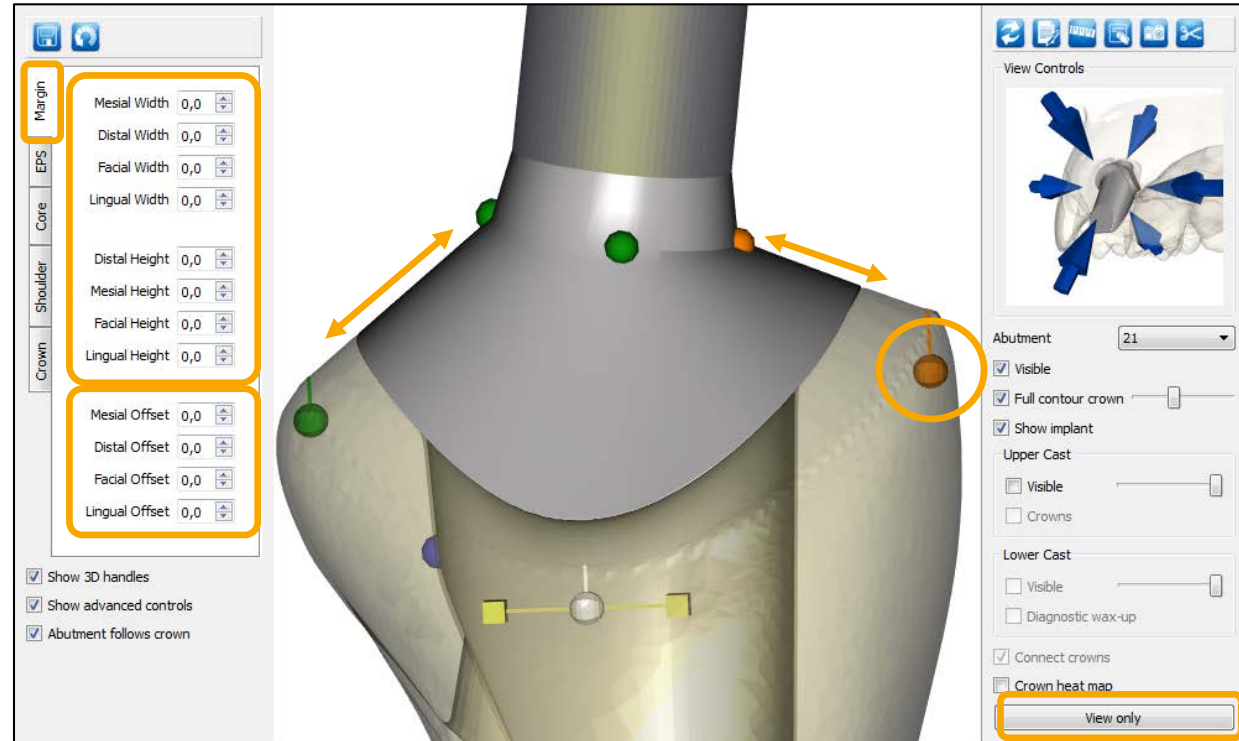
# Atlantis CustomBase: Abutment

Click on **Show Editor**

- To edit the CustomBase Abutment, one of the following four tabs should be enabled:
  - **Margin** – Controls the height and width of the abutment margin
    - To decrease the amount of titanium in the emergence profile (see orange arrows in the image to the right), the offset arrows can be used
  - EPS
  - Core
  - Shoulder

Note: In addition to using the arrows in the menu to the left, you can also use 3D handles to edit the abutment design

- Different 3D handles will show depending on which view your are using

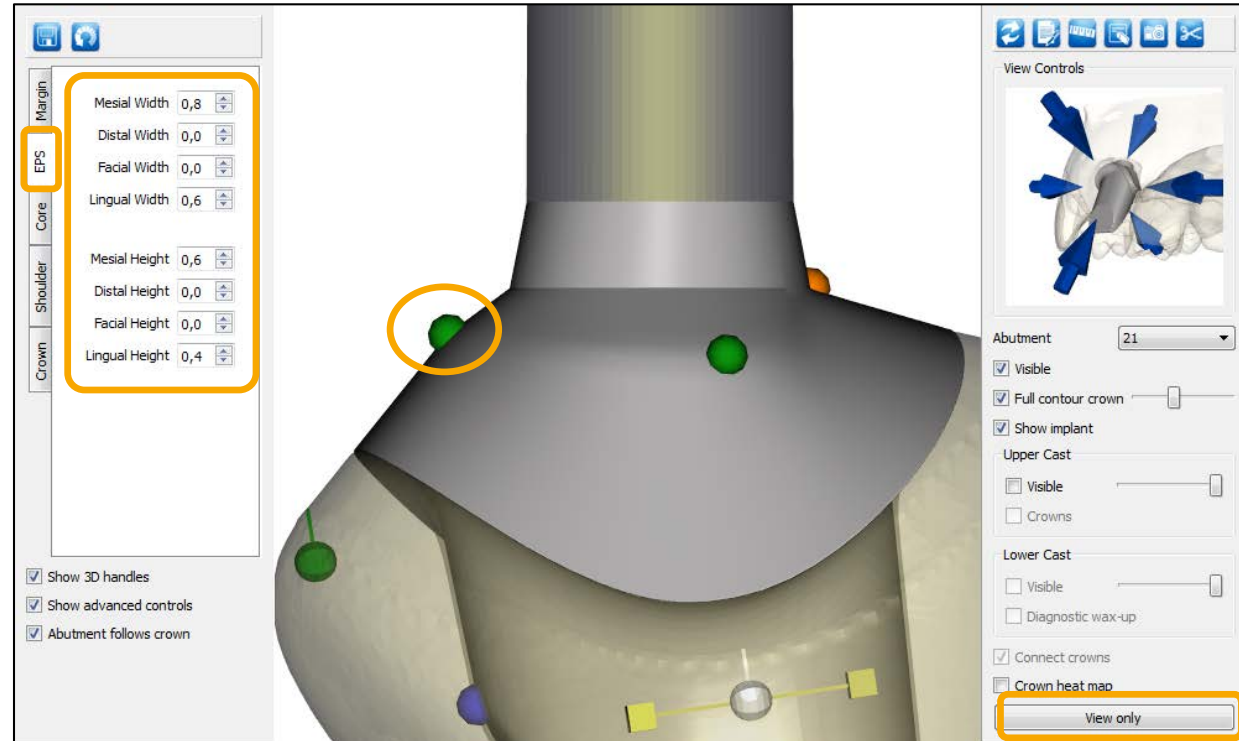




# Atlantis CustomBase: Abutment

Click on **Show Editor**

- To edit the CustomBase Abutment, one of the following four tabs should be enabled:
  - Margin
  - **EPS** - Controls the height and width of the emergence profile shape
  - Core
  - Shoulder



BACK

FORWARD

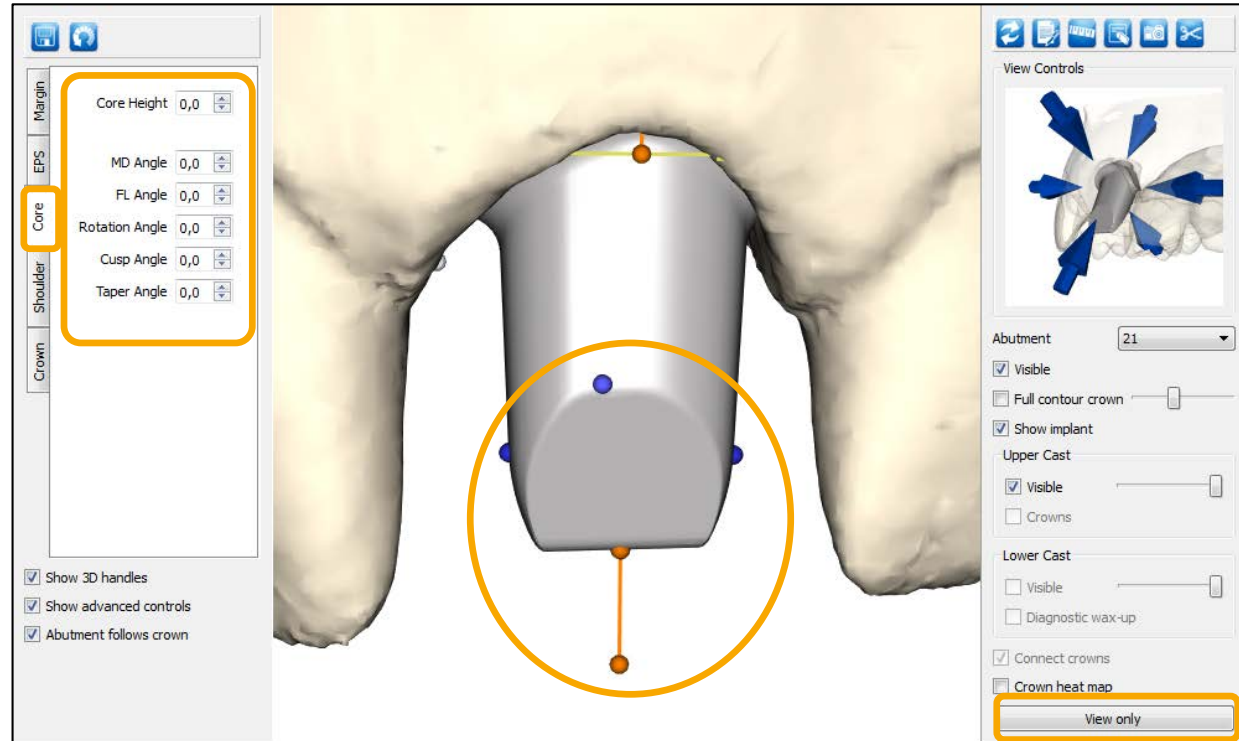
MENU



# Atlantis CustomBase: Abutment

Click on **Show Editor**

- To edit the CustomBase Abutment, one of the following four tabs should be enabled:
  - Margin
  - EPS
  - **Core** - Controls the aspects of the abutment design such as core height and angulation. Changes can also be made to the core angle mesial-distal (MD) and facial-lingual (FL). The Core adjustments function also includes options for changes to the core and cusp angles and incisal edge
  - Shoulder
- Shoulder



BACK

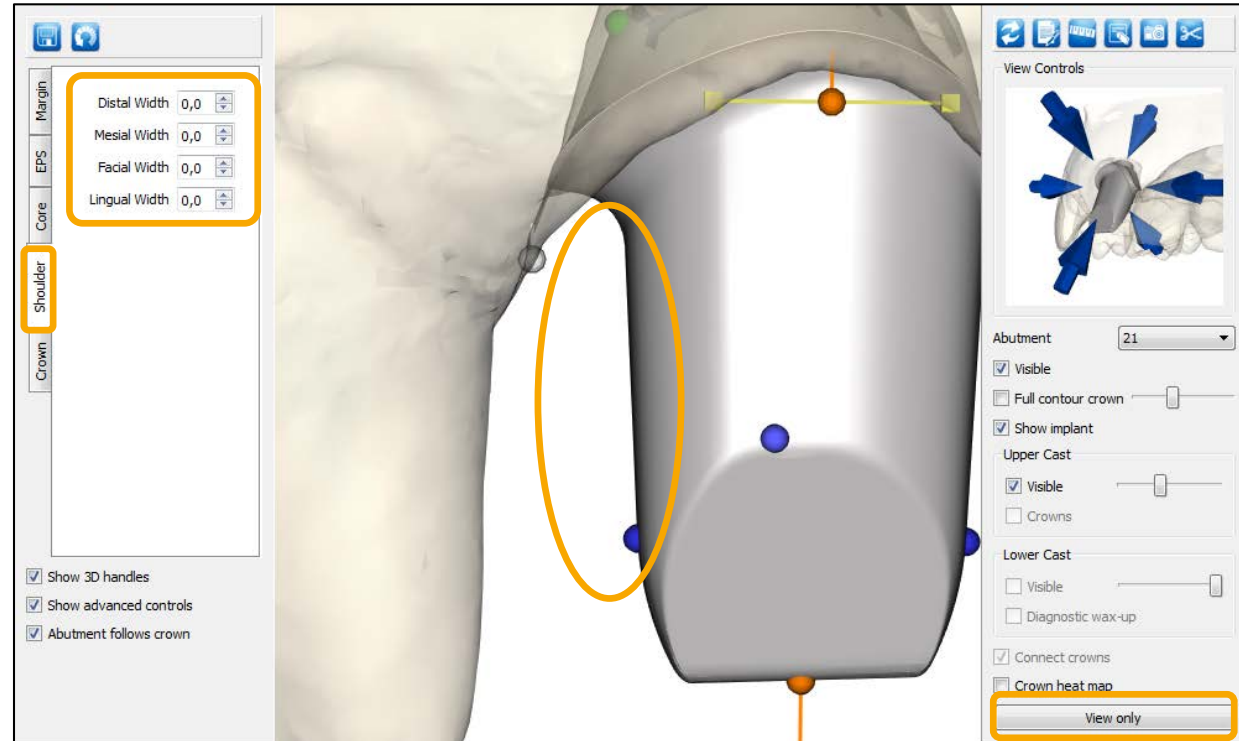
FORWARD

MENU

# Atlantis CustomBase: Abutment

Click on **Show Editor**

- To edit the CustomBase Abutment, one of the following four tabs should be enabled:
  - Margin
  - EPS
  - Core
  - **Shoulder** - Controls the of the abutment shoulders



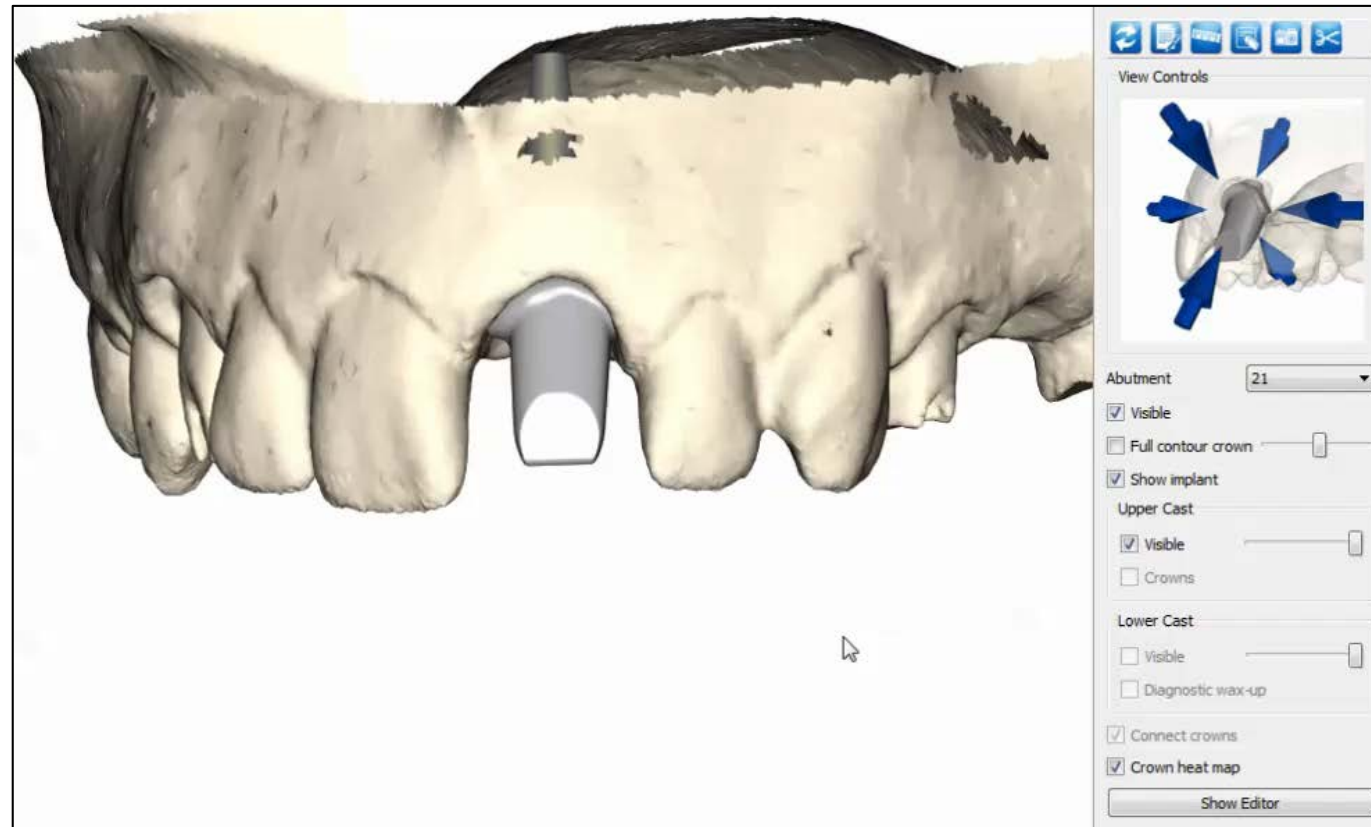
BACK

FORWARD

MENU

# Atlantis CustomBase: Abutment

## - Movie



BACK

FORWARD

MENU

Chapter 4.

Editing: Screw-retained restoration

Atlantis Crown Abutment

BACK

FORWARD

MENU

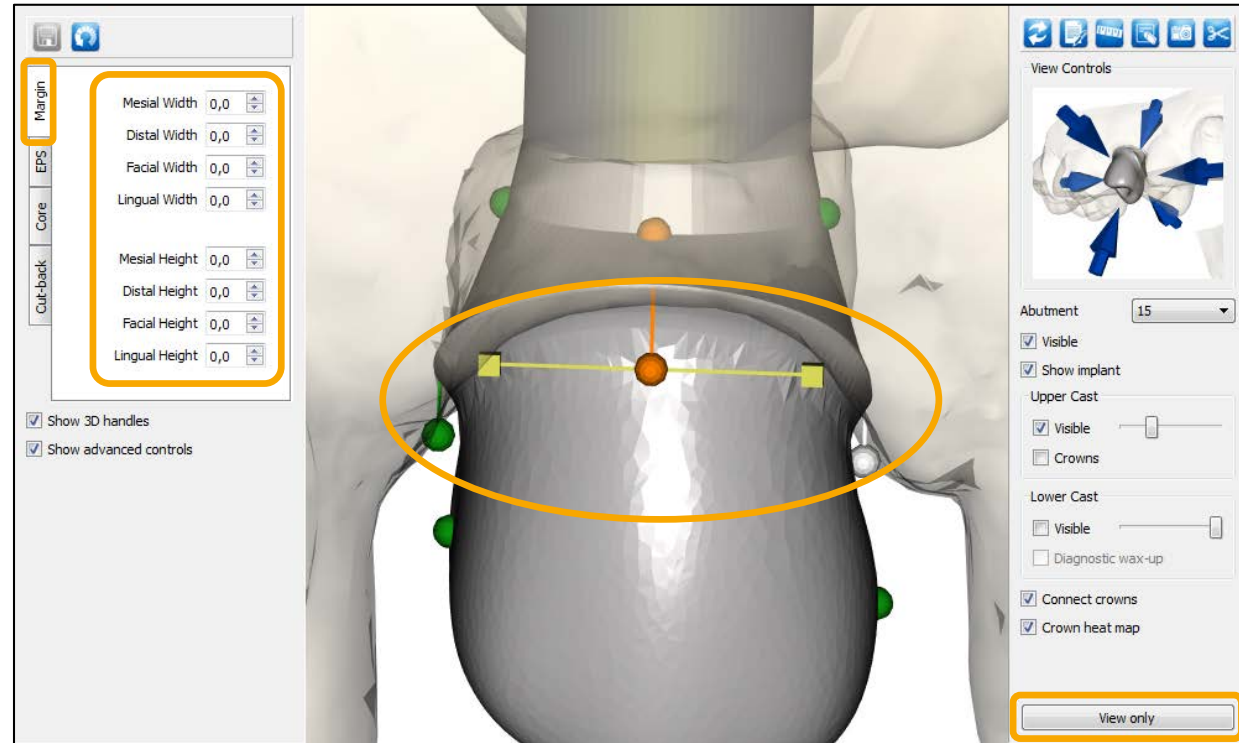
# Atlantis Crown Abutment

Click on **Show Editor**

- To edit the Atlantis Crown Abutment, one of the following four tabs should be enabled:
  - **Margin** - Controls the height and width of the abutment margin
  - EPS
  - Core
  - Cut-back

Note: In addition to using the arrows in the menu to the left, you can also use 3D handles to edit the abutment design

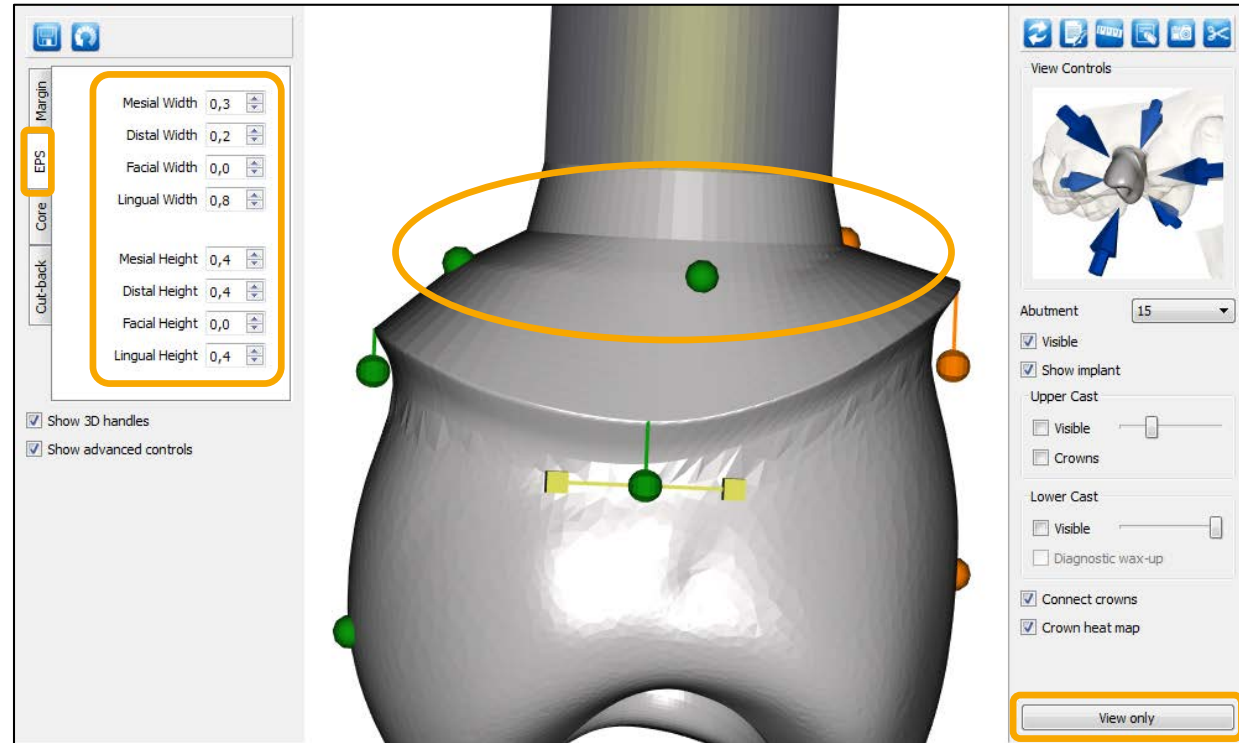
- Different 3D handles will show depending on which view your are using



# Atlantis Crown Abutment

Click on **Show Editor**

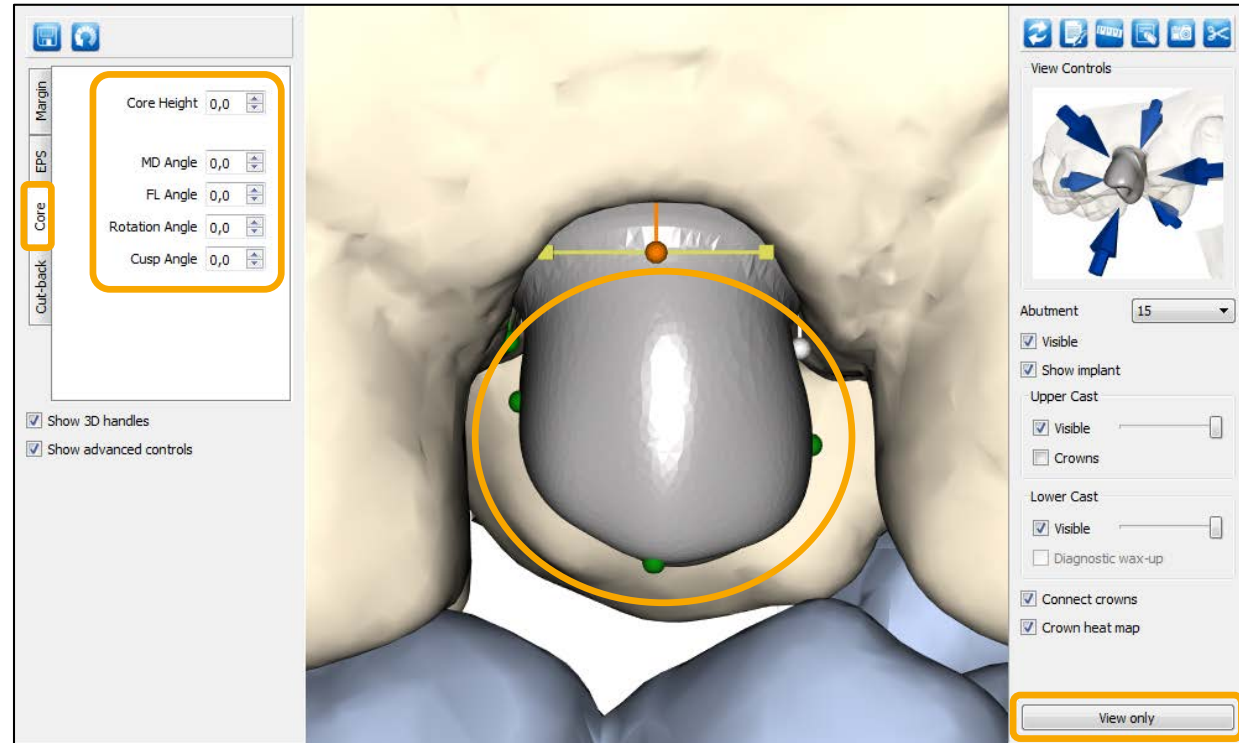
- To edit the Atlantis Crown Abutment, one of the following four tabs should be enabled:
  - Margin
  - **EPS** - Controls the height and width of the emergence profile shape
  - Core
  - Cut-back



# Atlantis Crown Abutment

Click on **Show Editor**

- To edit the Atlantis Crown Abutment, one of the following four tabs should be enabled:
  - Margin
  - EPS
  - **Core** - Controls the aspects of the abutment design such as core height and angulation. In Core adjustments, changes can also be made to the core angle mesial-distal (MD) and facial-lingual (FL). The Core adjustments function also includes options for changes to the core and cusp angles and incisal edge
  - Cut-back

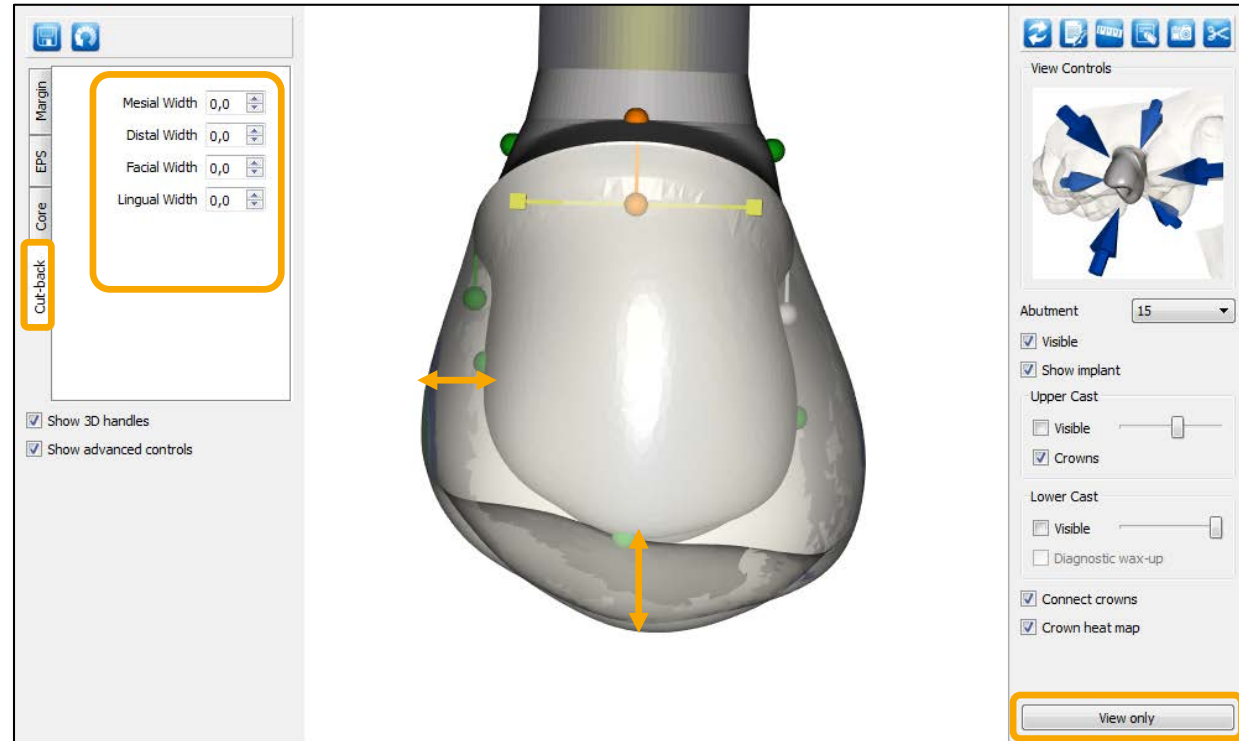




# Atlantis Crown Abutment

Click on **Show Editor**

- To edit the Atlantis Crown Abutment, one of the following four tabs should be enabled:
  - Margin
  - EPS
  - Core
  - **Cut-back** – Controls the amount of cut-back (space for veneering material)



BACK

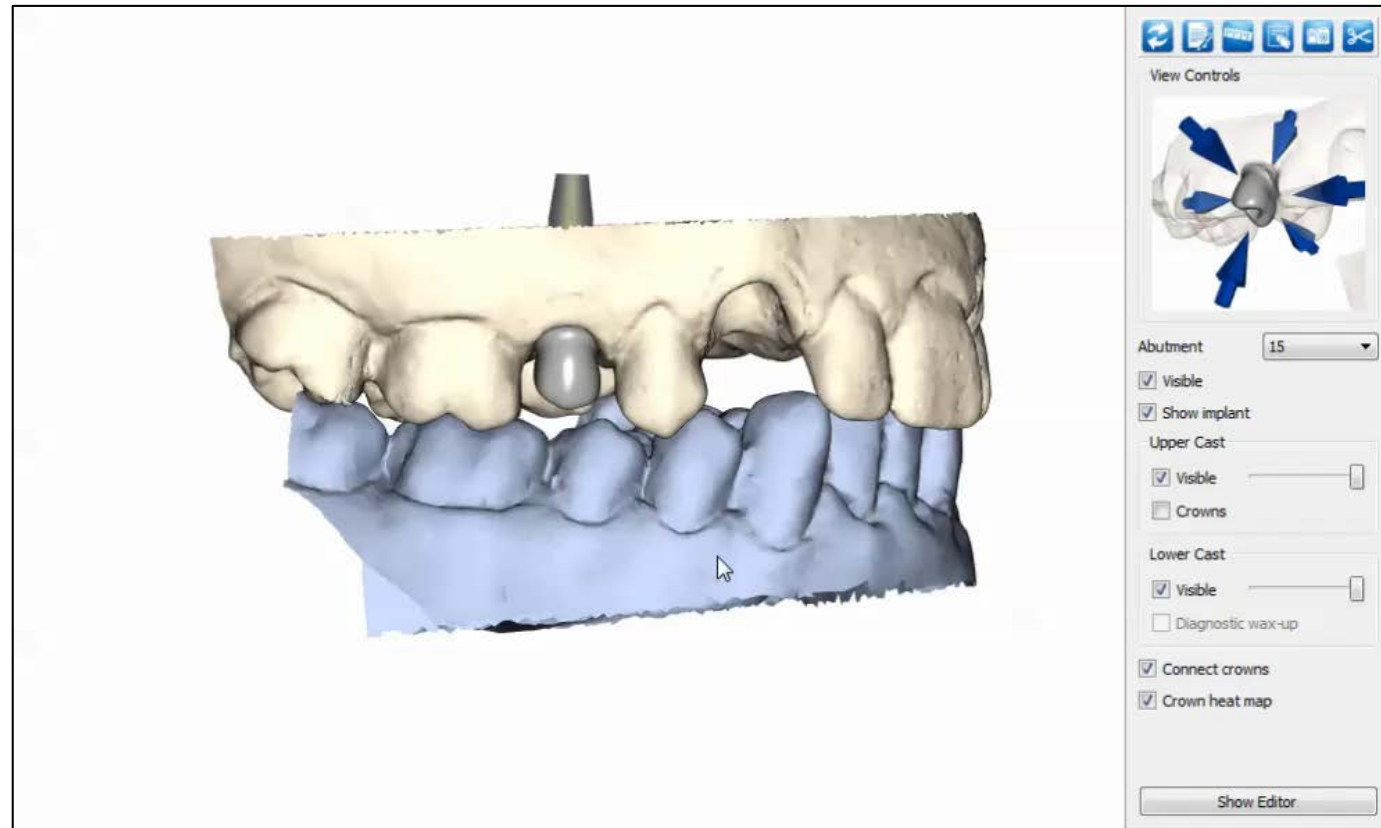
FORWARD

MENU



# Atlantis Crown Abutment

## - Movie



BACK

FORWARD

MENU

Chapter 5.

# Editing: Attachment-retained restoration

BACK

FORWARD

MENU

Chapter 5.

Editing: Attachment-retained restoration

Atlantis Conus Abutment, overdenture

BACK

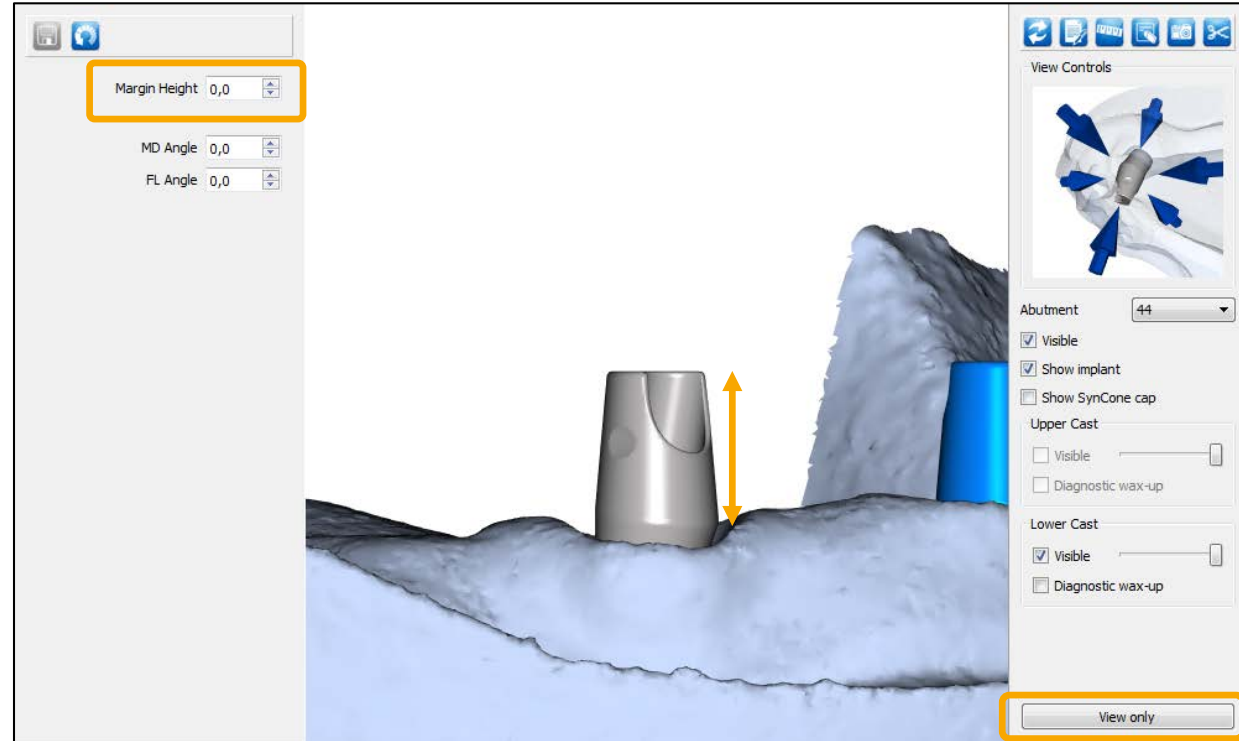
FORWARD

MENU

# Atlantis Conus Abutment, overdenture

Click on **Show Editor**

- **Margin height** – Is used to adjust the margin height
  - Since the core will remain fixed, increasing/decreasing the margin height will also increase/decrease the core height



BACK

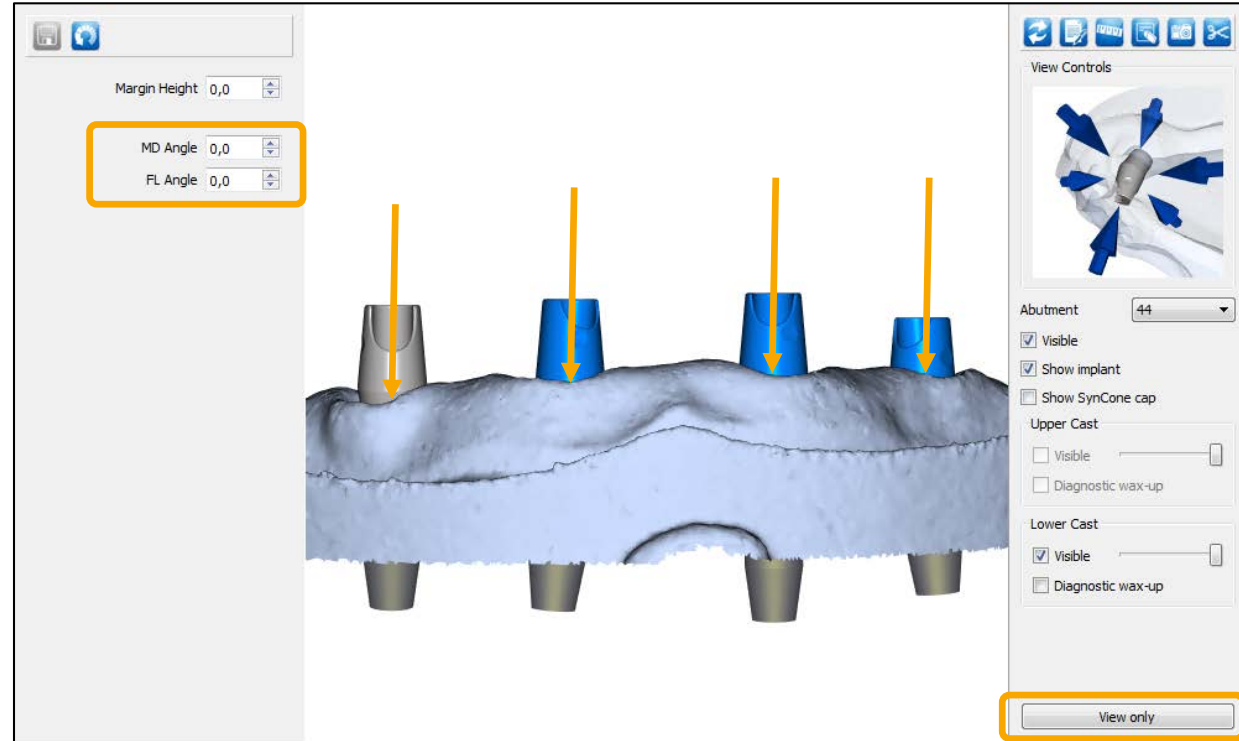
FORWARD

MENU

# Atlantis Conus Abutment, overdenture

Click on **Show Editor**

- **MD and FL angle** – Is used to adjust the common path of insertion for all abutments at once
  - MD will adjust the abutments in mesial-distal direction and FL in facial-lingual

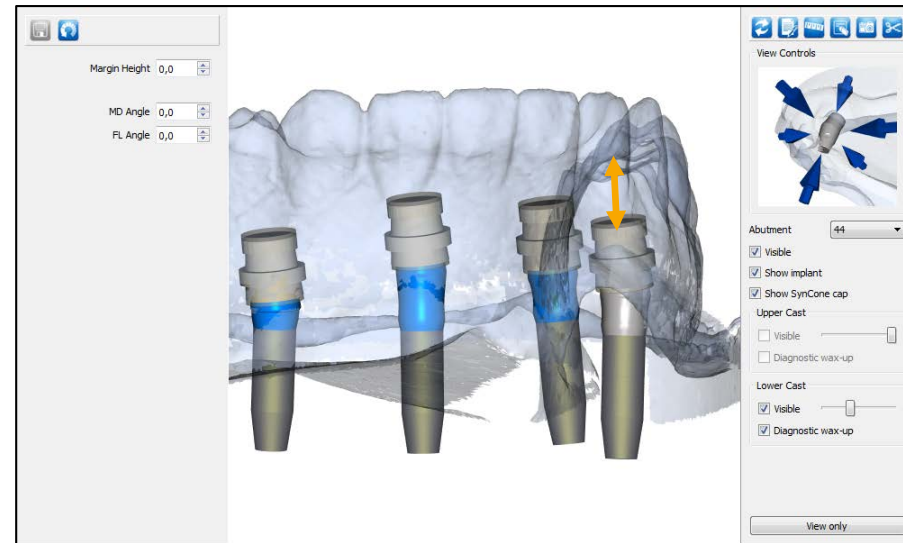
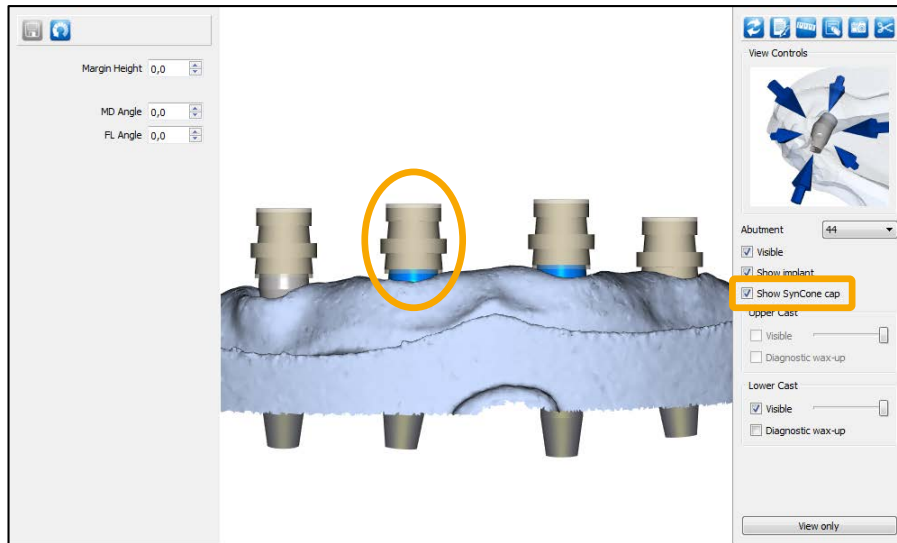


# Atlantis Conus Abutment, overdenture

## Display the **SynCone caps**

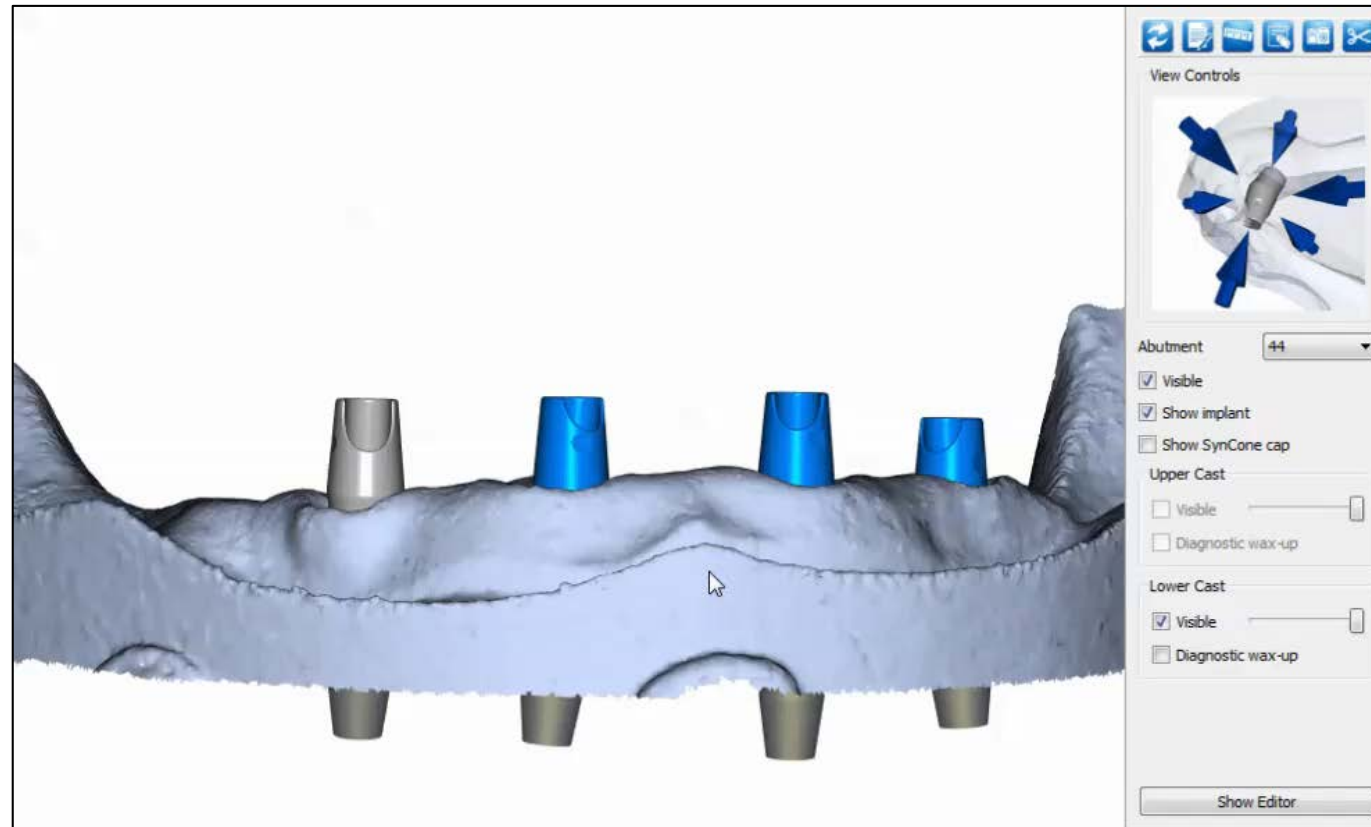
- Check the box “Show SynCone cap” in the visibility menu to the right. This will display a representation of the SynCone 5° caps on all abutments at once

Note: This represent the average cap height. For more information, please refer to chapter “Atlantis Conus Abutment, overdenture” in “Atlantis abutments – Design guide”.



# Atlantis Conus Abutment, overdenture

## - Movie



BACK

FORWARD

MENU

Chapter 5.

Editing: Attachment-retained restoration

Atlantis Conus Abutment, overdenture

BACK

FORWARD

MENU



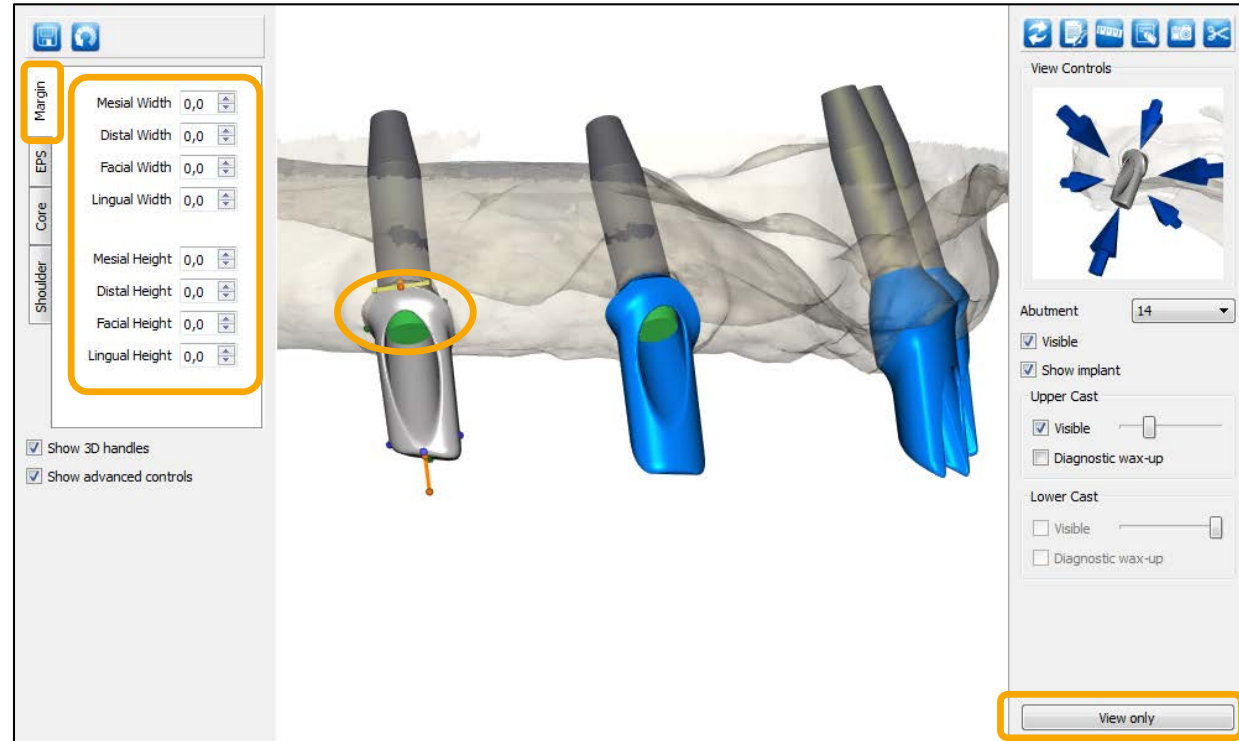
# Atlantis Conus Abutment, custom

Click on **Show Editor**

- To edit the Atlantis Conus Abutment, custom, one of the following four tabs should be enabled:
  - **Margin** – Controls the height and width of the abutment margin
  - EPS
  - Core
  - Shoulder

Note: In addition to using the arrows in the menu to the left, you can also use 3D handles to edit the abutment design

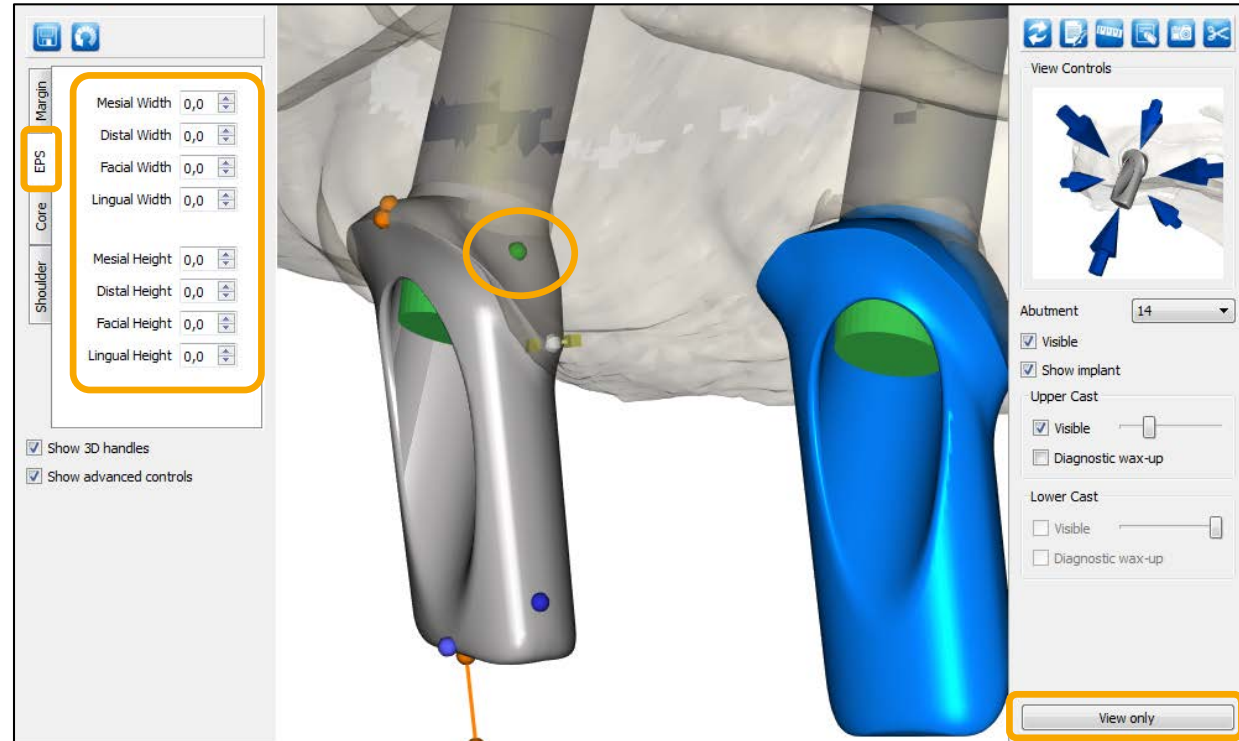
- Different 3D handles will show depending on which view your are using



# Atlantis Conus Abutment, custom

Click on **Show Editor**

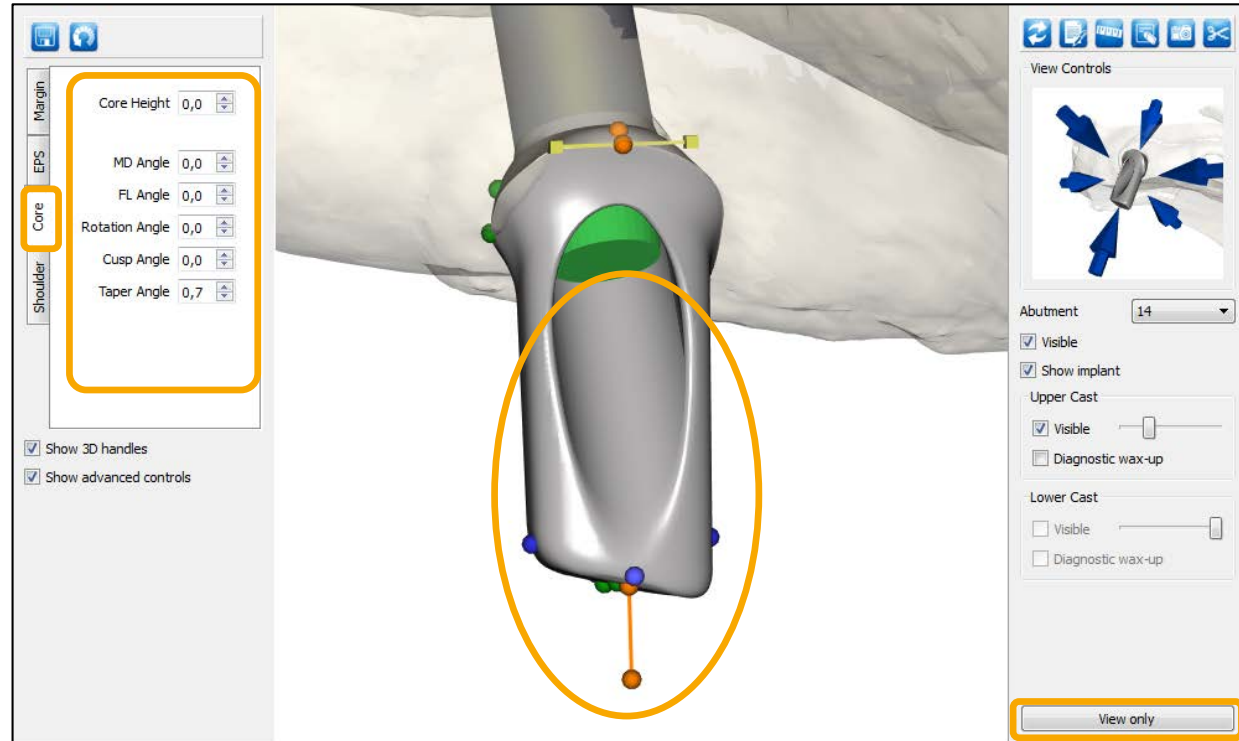
- To edit the Atlantis Conus Abutment, custom, one of the following four tabs should be enabled:
  - Margin
  - **EPS** - Controls the height and width of the emergence profile shape
  - Core
  - Shoulder



# Atlantis Conus Abutment, custom

Click on **Show Editor**

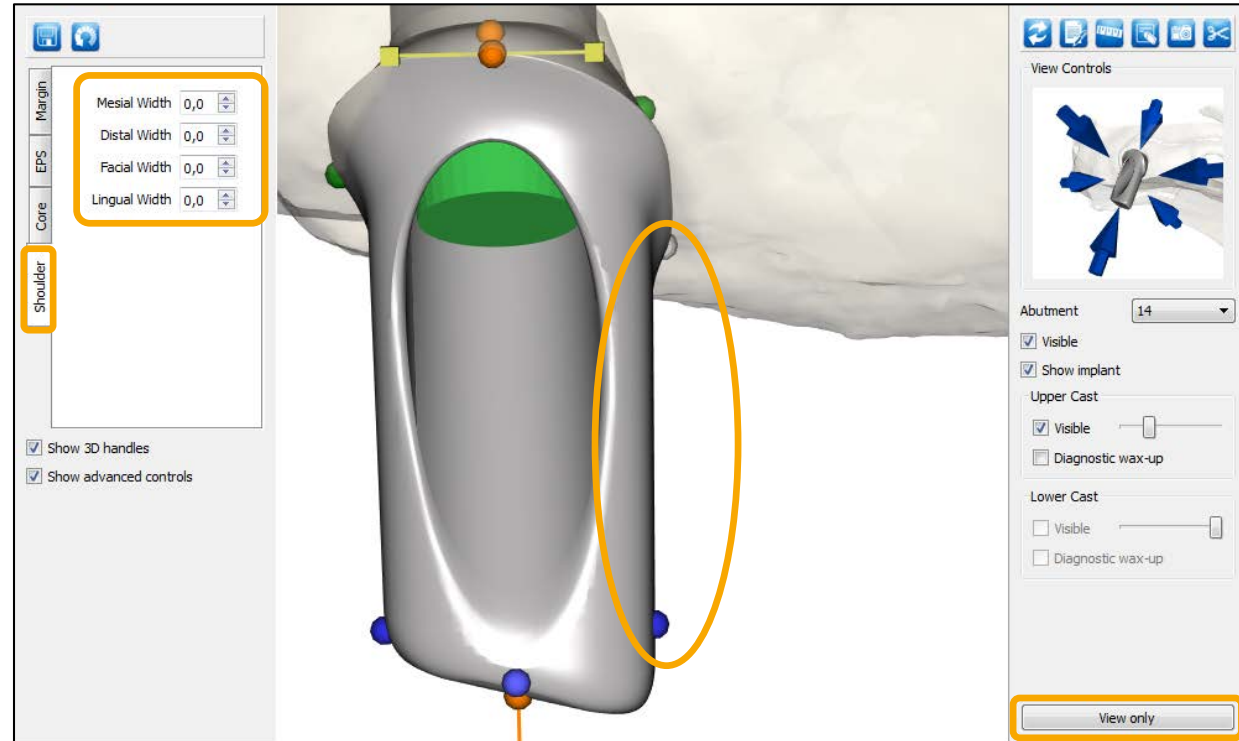
- To edit the Atlantis Conus Abutment, custom, one of the following four tabs should be enabled:
  - Margin
  - EPS
  - **Core** - Controls the aspects of the abutment design such as core height and angulation. Changes can also be made to the core angle mesial-distal (MD) and facial-lingual (FL). The Core adjustments function also includes options for changes to the core and cusp angles and incisal edge
  - Shoulder



# Atlantis Conus Abutment, custom

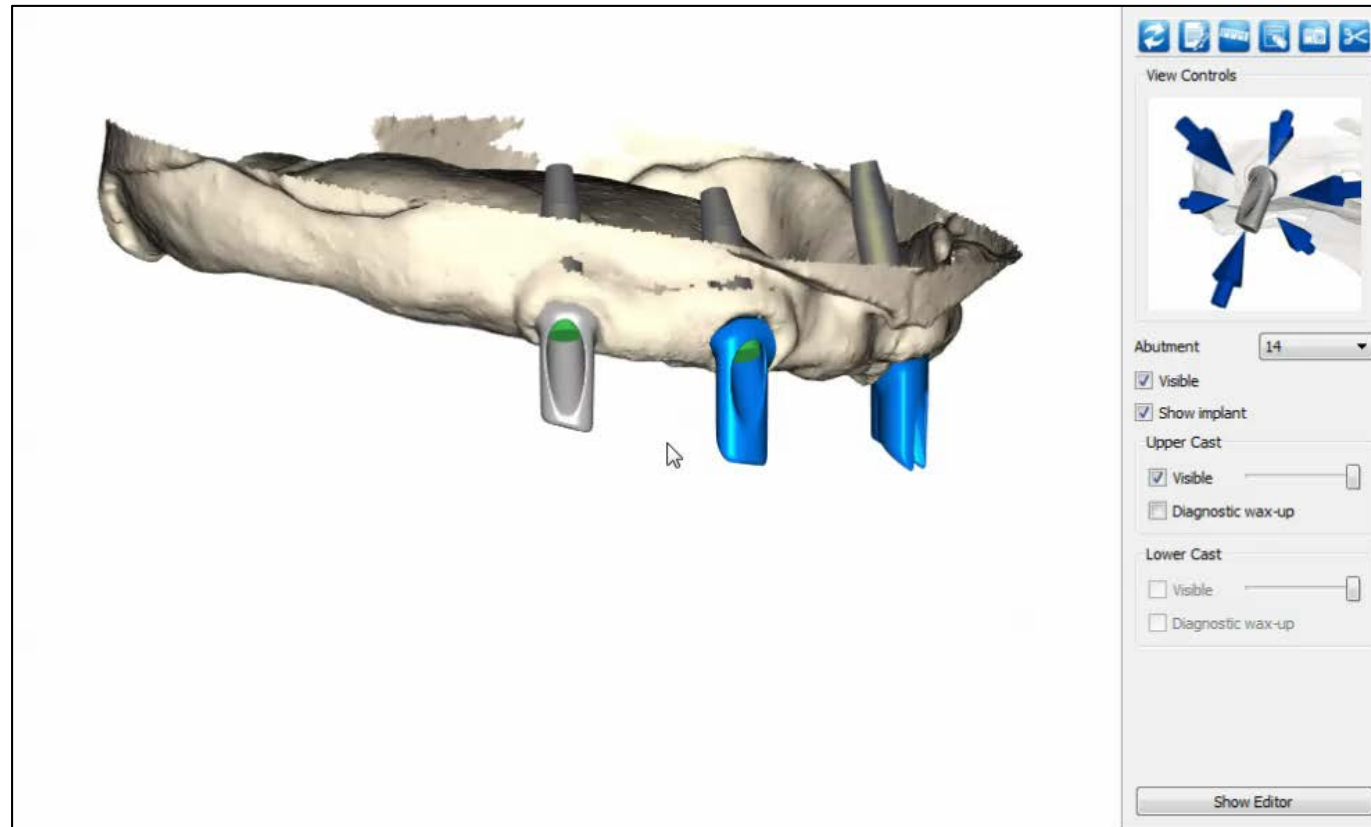
Click on **Show Editor**

- To edit the Atlantis Conus Abutment, custom, one of the following four tabs should be enabled:
  - Margin
  - EPS
  - Core
  - **Shoulder** - Controls the of the abutment shoulders



# Atlantis Conus Abutment, custom

## - Movie



BACK

FORWARD

MENU

# Chapter 6.

# Additional information

BACK

FORWARD

MENU

Chapter 6.

# Additional information

## Violation messages

BACK

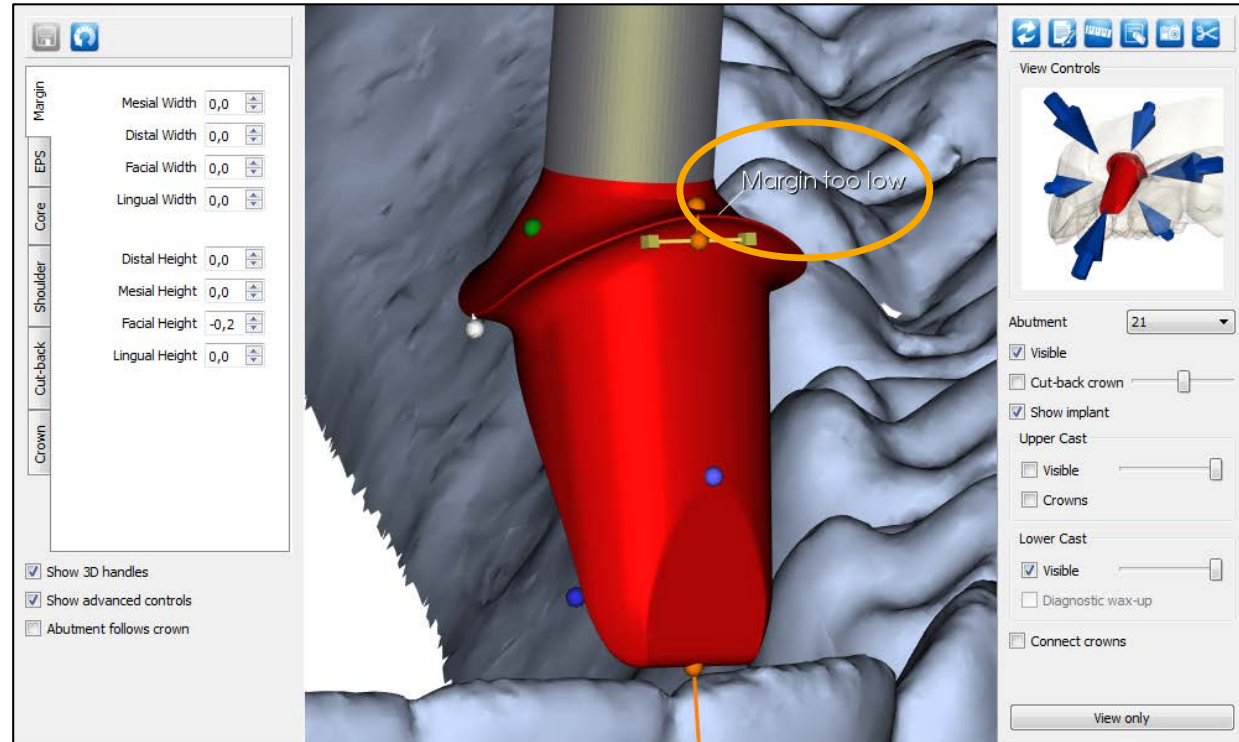
FORWARD

MENU

# Violation messages

Any changes to the abutment/crown that violates the milling constraints will prompt a violation message and change the abutment/crown color to red

- There are multiple solutions to regain abutment/crown validity, which are described in the following pages
  - In the example to the right: To make this abutment valid, the options are to increase the facial abutment margin height, decrease the facial abutment margin width or decrease the facial emergence concavity (EPS)





# Violation messages

## Possible scenarios and solutions:

### 1. Margin too low

- Increase abutment margin height
- Decrease abutment emergence concavity (EPS)
- Decrease abutment margin width

### 2. Abutment width too small

- Increase abutment margin width
- Decrease abutment shoulder

### 3. Facial cusp exceeds blank width

- Decrease width of facial abutment cusp
- Increase facial abutment shoulder
- Decrease facial abutment margin width
- Adjust abutment inclination

### 4. Facial cusp exceeds blank height

- Decrease height of facial abutment
- Decrease abutment height

### 5. Facial bevel exceeds blank width

- Increase facial abutment shoulder
- Decrease facial abutment margin width
- Adjust abutment inclination

### 6. Facial bevel exceeds blank height

- Decrease height of facial abutment cusp
- Decrease abutment height

### 7. Lingual cusp exceeds blank width

- Decrease width of lingual abutment cusp
- Increase lingual abutment shoulder
- Decrease lingual abutment margin width
- Adjust abutment inclination

### 8. Lingual cusp exceeds blank height

- Decrease height of lingual abutment cusp
- Decrease abutment height

### 9. Lingual bevel exceeds blank width

- Increase lingual abutment shoulder
- Decrease lingual abutment margin width
- Adjust abutment inclination

### 10. Lingual bevel exceeds blank height

- Decrease height of lingual abutment cusp
- Decrease abutment height

### 11. Core exceeds blank width

- Increase abutment shoulder
- Decrease abutment margin width
- Adjust abutment inclination

### 12. Margin exceeds blank width

- Decrease abutment margin width

# Violation messages

## Possible scenarios and solutions:

### 13. Screw head exposed

- Increase abutment margin width
- Decrease shoulder width

### 14. Abutment too high for machining

- Decrease abutment height

### 15. Abutment is too angled from implant

- Decrease abutment inclination

### 16. Margin width too small

- Increase abutment margin width

### 17. Margin height too low

- Increase abutment margin height
- Decrease abutment emergence concavity (EPS)
- Decrease abutment margin width

### 18. Invalid core surface

- Increase abutment margin width
- Decrease abutment shoulder width

### 19. Counterbore may self-intersect

- Increase abutment margin width
- Decrease abutment shoulder width

### 20. Tool shank interferes with counterbore

- Decrease abutment height
- Adjust cusp angle

### 21. Core tip too far from counterbore seating

- Decrease abutment height
- Adjust cusp angle

### 22. Crown exceeds blank width

- Decrease crown width

### 23. Crown exceeds blank width

- Decrease crown height

### 24. Cemented crown exceeds blank width

- Decrease crown width

### 25. Cemented crown exceeds blank height

- Decrease crown height

### 26. Cemented crown wall is too thin

- Increase crown width
- Increase abutment shoulder width
- Decrease abutment margin width

### 27. Abutment taper angle below limit for cemented crown

- Increase abutment taper angle

### 28. Keep out violation

- Increase abutment margin width or decrease shoulder width

BACK

FORWARD

MENU

Chapter 6.

# Additional information

## Save changes and design approval

BACK

FORWARD

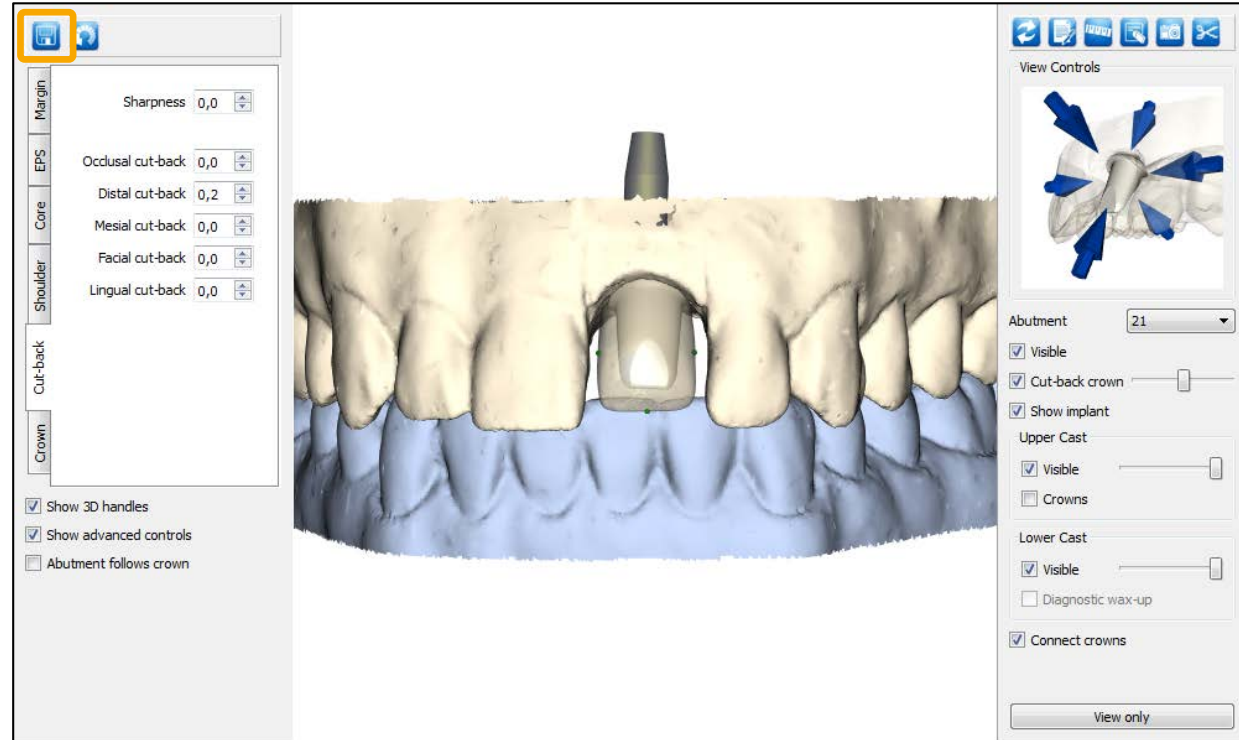
MENU

# Save changes and design approval

When satisfied with the design modifications it is important that you click the Save button the top left corner

- It is possible to save your edit/progress at any time, so that next time you open the case, the design will be just as you saved it
- When you click the Save button, your changes will also be sent to Dentsply Sirona so if you contact us, we will see the progress you have made up to that point

Note: It is not possible to save the case if the abutment/crown is invalid (red)



BACK

FORWARD

MENU

# Save changes and design approval

When the desired abutment/crown modifications have been saved, it is now time to either approve the design or send a comment to Dentsply Sirona for further design modifications

- Go back to the case in Atlantis WebOrder, scroll down to the bottom of the page
  - Check **Design approval granted** and click the **Post** button
  - If further changes are required, check **Design is not approved**, type in your comments in the comments field and click **Post**

Design approval

☒ Design approval granted.

**Please note:**

- Design approval will send this case directly for milling.
- Any changes saved in 3D Editor are automatically imported.
- If you have requested changes through the comment field below, do not approve the case until notified.

☐ Design is not approved. Please make the following modification(s) and resend for approval.

Please enter comments below in English.

Post

Chapter 6.

# Additional information

## Undo / Redo and Revert Design

BACK

FORWARD

MENU

# Undo / Redo and Revert Design in the Editing mode

- **Undo an action**

Click **Undo** in the upper-left corner bar



*The parameter setting should be reverted to the previous value before the change. You can undo changes, even after you have saved, and then save again, within the undo limits.*

- **Redo an action**

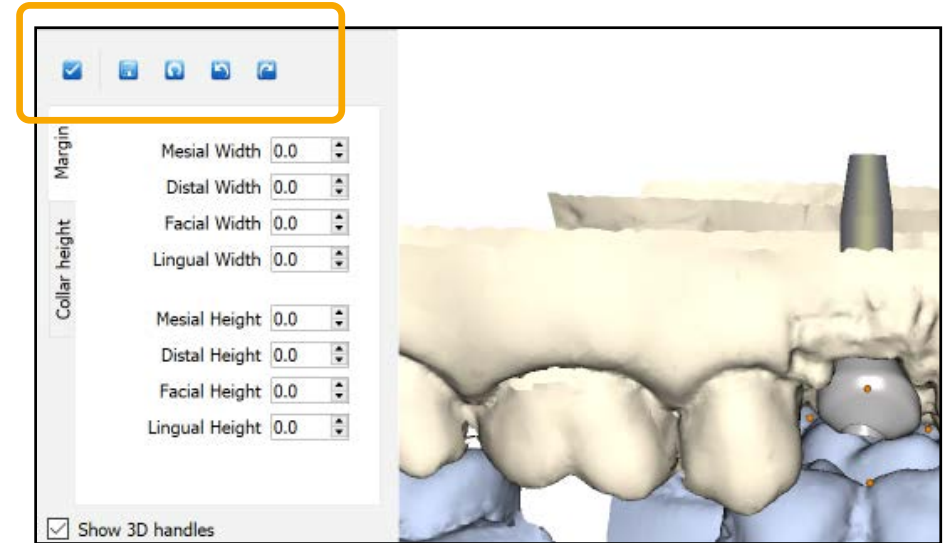
Click **Redo** in the upper-left corner bar



- **Revert Design**



You may be able to **Revert Design** to the original design proposal.



Chapter 6.

# Additional information

## Frequently asked questions

BACK

FORWARD

MENU



# Frequently asked questions

**Q:** *Can I stop working on changes and come back to them later?*

**A:** Yes. You can save your work at any time by clicking on the Save button. Next time you open the case, the abutment design will include any changes you have previously saved.

**Q:** *What should I do if I can't make the changes I want?*

**A:** Some elements of the abutment design that cannot be modified using Atlantis Editor. If you cannot achieve the design changes you are looking for, please request changes to your case by writing your request in the comment box and sending it in to Dentsply Sirona.

**Q:** *If I've made some changes but need help, can Dentsply Sirona see what I've done so far?*

**A:** Yes. Once you click the Save button, your changes are registered with Dentsply Sirona. When you contact us, we will see the progress you have made up to that point.

**Q:** *Can I share Atlantis Editor with my clinician?*

**A:** Yes. You will still be able to share case images as usual. If you are sharing 3D case images with someone who has not previously downloaded the viewing software, they will be required to download Atlantis Editor in order to view the images that you have sent. Please note however, that click-to-share recipients can only view case images and will not have editing capabilities.

---

BACK

FORWARD

MENU

# Frequently asked questions

**Q:** *Does the Atlantis Editor software have safeguards built in that help prevent improper design edits?*

**A:** Yes. There are various parameters within the Atlantis Editor software that help to ensure optimal strength and function of your abutment design:

- As you change one parameter, other design parameters are changed accordingly to maintain the most proper abutment shape achievable. All elements of the Atlantis abutment design are set to allow for an optimal clinical result. For example, the abutment core taper angle and path of insertion are tightly maintained to ensure the absence of undercuts and a precise fit.
- All change are monitored as they are made against manufacturing standards. This allows proper control of minimum angles and ensures that abutments are not designed to be larger than the material blank. If you exceed the blank limit, for example, the abutment will turn red to indicate that the requested design does not meet manufacturing requirements. Note that the blank limit has two elements, a length, which controls the maximum height of the abutment, and a radius, which controls how far the design can go from the screw hole.

**Q:** *Why can't I see the shape of the planned tooth when I make design changes to the abutment design?*

**A:** For Atlantis Abutment cases ordered without any type of Atlantis Crowns, with 4 or more abutments included in the order, we require you to send in a wax-up. Hence the reason why you cannot see the planned crowns.

**Q:** *Why can't I control parallelism in Atlantis Editor?*

**A:** To ensure efficiency in your abutment design editing process, certain elements such as parallelism and adjustments to the path of insertion are not included in the Editor because they concern issues about working with multiple teeth. We are always looking for ways to add features, while keeping this tool easy to use for the majority of our customers. In the meantime, you can achieve parallelism by simply requesting it in the parallelism section of Atlantis WebOrder. You can also make adjustments to the path of insertion by noting it in your request to the Atlantis Abutment Design Technician.

BACK

FORWARD

MENU

# Frequently asked questions

**Q:** *Why does one side of my abutment core not move as I change the core angle?*

**A:** For single unit cases, or cases where the units are not splinted, the path of insertion will follow the core angle. In multi-unit cases, however, where the multiple units are to be splinted together, the path of insertion angle for the splinted units also factors into the calculation of the abutment core shape. In these cases, the new core angle is in conflict with the path of insertion, and the tool tries to maintain an optimal balance between the new core angle and the path of insertion. In other words, one side of the abutment matches the core angle, while the other side is limited by the path of insertion.

**Q:** *I want to be able to create curved versus straight base shape. Is that possible?*

**A:** You are able to create concave and convex emergence shapes individually on each side of the abutment by enabling “Advanced controls” in the Atlantis Editor.

**Q:** *I want to make the cusps rounder and also change their position and height, is that possible?*

**A:** By enabling “Advanced controls” you are able to do this.

**Q:** *What is a “keep out zone”?*

**A:** There are numerous design parameters built into the sophisticated Atlantis VAD (Virtual Abutment Design) software that help to ensure at the mechanical integrity of the abutment is maintained. The “keep out zone” is the parameter that helps preserve the minimum core thickness needed at the base of an abutment.

# Frequently asked questions

**Q:** *How do I adjust the cut-back for an Atlantis crown abutment with the Editor?*

**A:** You adjust the cut-back for a Atlantis Crown Abutment the same way you adjust the shoulder for an Atlantis abutment, but via the Cut-back tab instead. The Cut-back tab (page 19) controls the porcelain support. To find out more about Atlantis Crown Abutment, refer to Atlantis Design Guide.

**Q:** *How do I solve insufficient core retention?*

**A:** If the software determines that the core of the abutment is too small to hold a crown, the abutment will be displayed in red, indicating that it cannot be manufactured to the specifications requested. Changes to the margin position and shoulder widths are good ways to fix this problem.

**Q:** *How do I solve thin core walls?*

**A:** Certain shape combinations result in thin core walls, which the software automatically reshapes to avoid fractures or sharp edges. This can appear as less core height than expected along one of the walls. You can increase the thickness in that area by reducing the corresponding shoulder width, widening the margin position, and sometimes by moving the core angle away from the thin area.

**Q:** *How do I make my margins lower?*

**A:** If you are unable to lower the margin further, this indicates that you have reached the minimum margin height requirement needed for the abutment-to-implant interface.

# Frequently asked questions

**Q:** *How do I adjust the height to fit within the blank?*

**A:** When you increase the height of the abutment beyond the maximum manufacturing height limits, the abutment will turn red to indicate that it no longer meets manufacturing requirements. If this happens while you are increasing the abutment height, simply reduce the height until the abutment color changes back to normal. This will also happen if the abutment exceeds the maximum manufacturing width or angle, and/or other design parameters. In all these cases, undo the change you made until the abutment color changes back to normal.

**Q:** *What do nomenclatures such as “core” and “base” mean?*

**A:** Please refer to the “Abutment design terminology” section on page 36.

**Q:** *Does the Atlantis warranty cover changes I made to the original design?*

**A:** The Atlantis warranty covers all Atlantis products that are manufactured.

**Q:** *Is Atlantis Editor compatible with the Mac?*

**A:** No. Mac compatibility for Atlantis Editor is currently not available.

Note: For other questions or issues, please contact Dentsply Sirona Implants Customer Service

BACK

FORWARD

MENU

Thank You



BACK

FORWARD

MENU