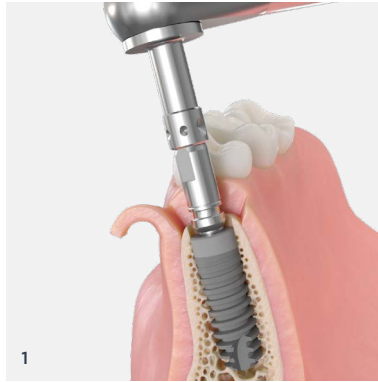


Quick guide - Ankylos TitaniumBase digital workflow

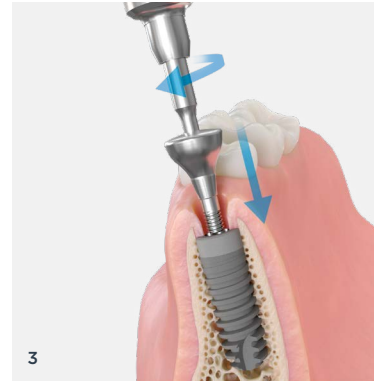
Clinical procedure



1 Place the implant using the Ankylos surgical protocol.

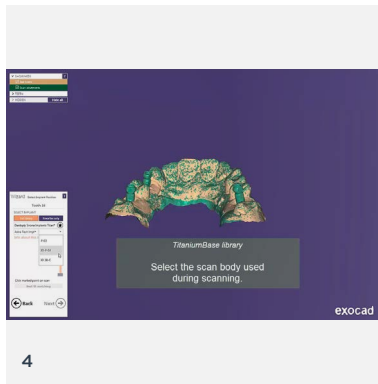


2 Place the scan body with hand-torque (max. 5 Ncm) into the implant and scan intraorally.
Send scan data to the dental laboratory.

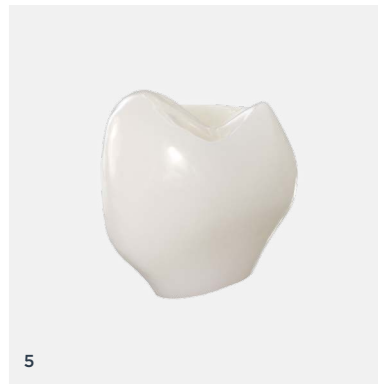


3 Remove scan body and insert a gingiva former or a temporary restoration.

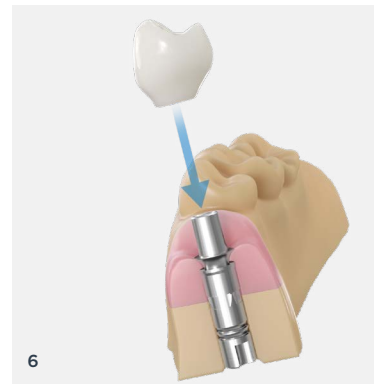
Laboratory procedure



4 Download the TitaniumBase library from <https://www.orderdigitalsolutions.com> and import the digitalized patient situation from the intraoral scan.
Design the prosthetic restoration in 3Shape or Exocad CAD software.
Design a printed model.



5 Manufacture and finalize the prosthetic restoration according to the material manufacturer's instructions for use.



6 Manufacture the printed model and insert the printed model analog.
Insert TitaniumBase onto the printed model analog and cement the prosthetic restoration to the TitaniumBase. Send the model with the prosthetic restoration to the dentist

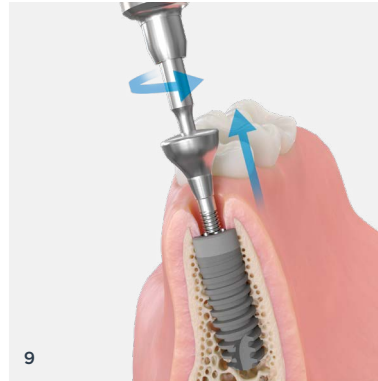
For detailed instructions see Step-by-Step Guide for Elos Accurate® Analog for Printed Models at elosdental.com.

Quick guide - Ankylos TitaniumBase digital workflow

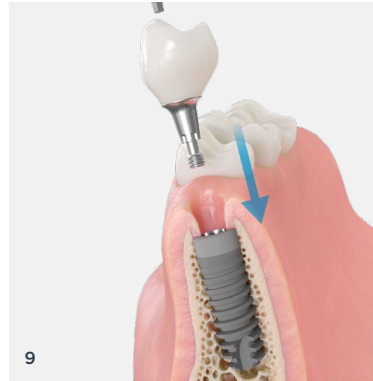
Clinical procedure



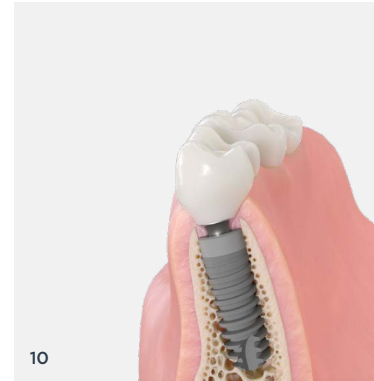
7
Remove the restoration from the working model. Clean, disinfect and sterilize the dental restoration.



9
Remove the gingival former or temporary restoration.



9
Insert the restoration into the patient's mouth. Tighten the screw with the Hex driver 1mm and the prosthetic ratchet to the recommended torque, 15 Ncm.
Check the contact with adjacent teeth and the occlusion. Make adjustments if needed.



10
Cover the screw head before the screw channel is filled with a suitable material.

A workflow with cement-retained restoration is possible with TitaniumBase as well. Herefore a meso structure is cemented onto the TitaniumBase extraorally. The restoration is cemented onto the meso structure introrally.

Product Assortment

Ankylos TitaniumBase



Ankylos Gingiva Former C/ D 4.2



Further Ankylos gingiva formers / sulcus formers can be found in the Ankylos product catalog or Dentsply Sirona webshop

Ankylos Prosthetic Ratchet



Ankylos Insert for Prosthetic Ratchet



Ankylos Handle for Screwdriver



Ankylos Screwdriver Insert



Elos Accurate® Scan Body*



Elos Accurate® Scan Body Driver Medium*



Atlantis IO FLO



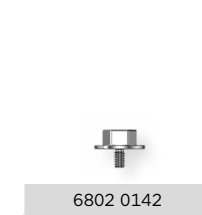
Printed Model Analog - Ankylos C/X



Elos Accurate Analog Pliers



Elos Accurate Analog Insertion Screw



Elos Accurate Analog Insertion Pin



*Elos Medtech Product Assortment: <https://shop.elosmedtech.com>

Ankylos TitaniumBase is not available in US.